

Social Equity Considerations for Cities' Decision Making Related to Inner, Nearby, and Faraway Forests

This Learning Guide is a work in progress.
Please help us improve by submitting feedback
at info@cities4forests.com

June 2020

TABLE OF CONTENTS

1.	Introduction	5
2.	Cities4Forests – Commitment to Social Equity	6
3.	Outline	7
PART I: Key Social Equity Concepts and Background		8
4.	Social Equity Concepts	8
5.	Processes to Enhance Social Equity	10
6.	Social Impacts of Equitable Policies and Programs	11
7.	Other Benefits and Considerations for a Social Equity Approach	12
PART II: Overarching Social Equity Considerations		13
8.	Policy Commitments for Social Equity	13
9.	Use of Socioeconomic Information	14
10.	Stakeholder Identification	15
11.	Meaningful Stakeholder Engagement	17
12.	Equal Employment Opportunities	18
PART III: Social Equity Considerations for Each Forest Level		19
13.	Equity in Spatial Distribution of Inner Forests	19
14.	Land Use in Inner Forests	21
15.	Affordability Considerations in Inner Forests	22
16.	Accessibility and Safety Considerations in Inner Forests	23
17.	Ecotourism and Recreation in Nearby Forests	25
18.	Cities’ Engagement with Faraway Forests	26
19.	Community Forest Management in Faraway Forests	27
20.	Faraway Forest Protection and Use Policies	29

21. Promoting Social Standards in Procurement 30

Summary and Selected Resources 32

22. Summary 32

23. Selected Resources 33

24. Credits 39

25. References..... 40

1. Introduction

Purpose of this guide

This guide is developed by Cities4Forests to direct cities toward positive, equitable, and inclusive forest-related programs. This guide follows the the Learning Guide "[Urban Forests for Healthier Cities](#)" and serves as a reference point for cities to increase their awareness about social equity considerations related to their forest-related programs and policies. For cities that have already integrated some or all of the relevant considerations, this Learning Guide may serve as a checklist or a reminder to identify relevant social equity goals and provide additional resources to track progress on them. The topics covered here are intentionally broad in scope, and users are advised to adapt them to their own social, economic, cultural, and political context.

Who is this guide meant for?

City- and community-level leaders, urban planners, government and NGO officials, and other decision-makers and stakeholders involved in the planning, implementation, and management of urban forests.

What will you learn by reading this guide?

- ✔ A better understanding of the opportunities and challenges of including social equity considerations in cities' forest-related programs and policies
- ✔ An awareness of entry points, resources, and information to make forest-related programs and policies more inclusive and equitable across multiple forest scales
- ✔ Inspiration and insights from case studies to design and implement equitable forest-related programs and policies

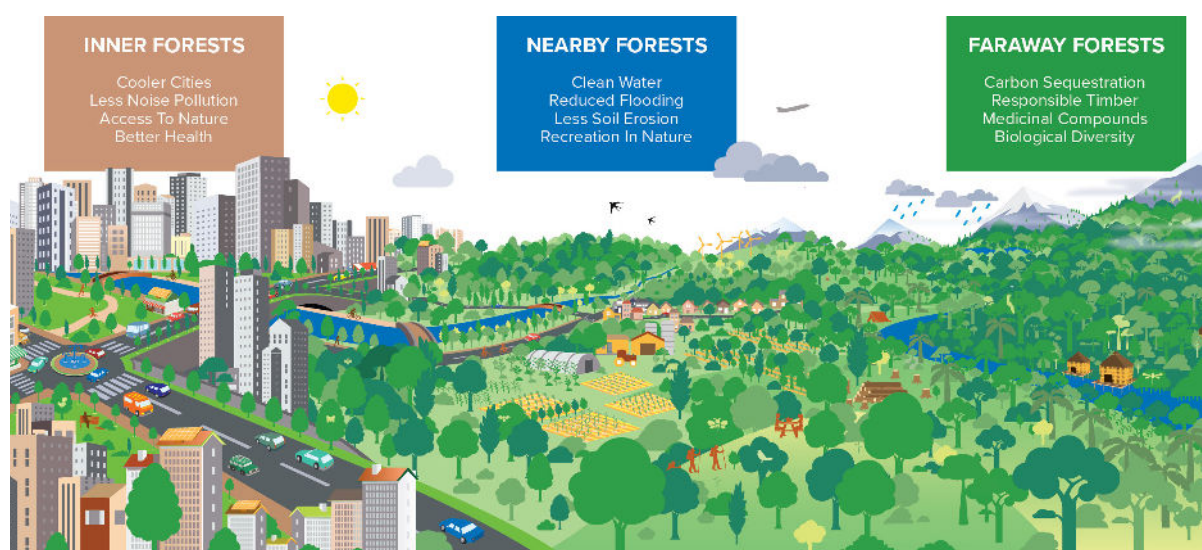
2. Cities4Forests – Commitment to Social Equity

Cities4Forests, co-founded by Pilot Projects, REVOLVE, and the World Resources Institute, is a voluntary coalition of more than 60 cities, supported by global, regional, and local partners including Norway’s International Climate and Forests Initiative (NICFI), the UK Government, and Fundación FEMSA. We work with cities to help them recognize their interdependence with the world’s forests and use their political, economic, and cultural power to conserve, manage, and restore them. We raise awareness of the benefits of trees and forests (especially for the climate, water, biodiversity, and human health and well-being), and catalyze forest-positive city actions, policies, and investments by providing tailor-made technical assistance.

We recognize the triple bottom line benefits of equitable, sustainable, and efficient projects. To help cities integrate **social equity** ^❶ considerations in their forest-related work and other **nature-based solutions** ^❷, this Learning Guide presents the latest research and resources to guide global cities toward positive, equitable, and **inclusive** ^❸ forest-related projects.

This Learning Guide uses the Cities4Forests categorization of forest levels –

- **Inner Forests** – Trees and green infrastructure within city boundaries, including street trees, parks, and open green spaces
- **Nearby Forests** – Trees and forests adjacent to cities, such as in watershed areas
- **Faraway Forests** – Large, remote, intact or otherwise ecologically important forests, particularly tropical forests



The three forest levels. Image: [Cities4Forests, 2019](#).

❶ Social equity: The absence of avoidable or remediable differences among groups of people, whether those groups are defined socially, economically, demographically, or geographically ([WHO](#)¹⁰²). Equitable processes call for acknowledging that individuals or groups may have unequal starting points and require different levels of support based on their specific needs to achieve fairness in outcomes ([Center for the Study of Social Policy](#)²⁴).

❷ Nature-based solutions: Actions to protect, sustainably manage, and restore natural or modified ecosystems, which address societal challenges (e.g. climate change, food and water security, or natural disasters) effectively and adaptively, while simultaneously providing human well-being and biodiversity benefits ([IUCN](#)²⁰).

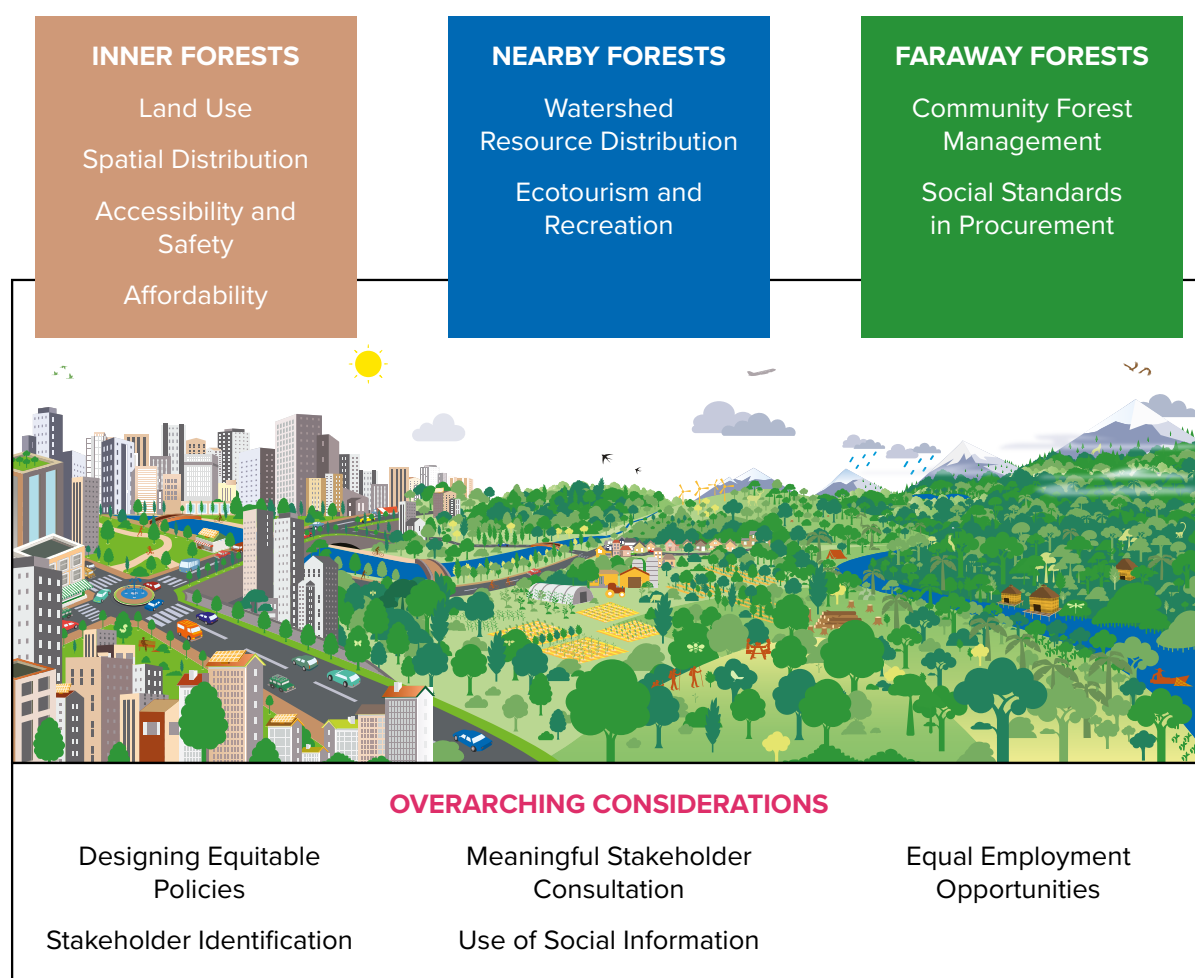
❸ Inclusive: The multi-dimensional process of improving the terms of full and active participation in civic, social, economic, and political activities. Social inclusion also includes improving the terms of participation in decision-making processes for all people, especially those who are disadvantaged on the basis of age, sex, disability, race, ethnicity, origin, religion, or economic or other status, through enhanced opportunities, access to resources, voice and respect for rights. Thus, social inclusion is both a process and a goal. (adapted from [UNDESA](#)⁸⁴).

3. Outline

This Learning Guide is divided into three parts:

Part 1 is meant to provide the background and rationale for social equity considerations. It covers:

- **Social equity concepts** and key relevant terms for the purpose of this guide
- **Approaches to enhance social equity** that can inform city policies and plans
- Information on key issues related to the **impacts of social equity**
- **Other benefits and considerations** of adopting a social equity approach



Social equity considerations described in this learning guide. Image: [Cities4Forests, 2020](#).

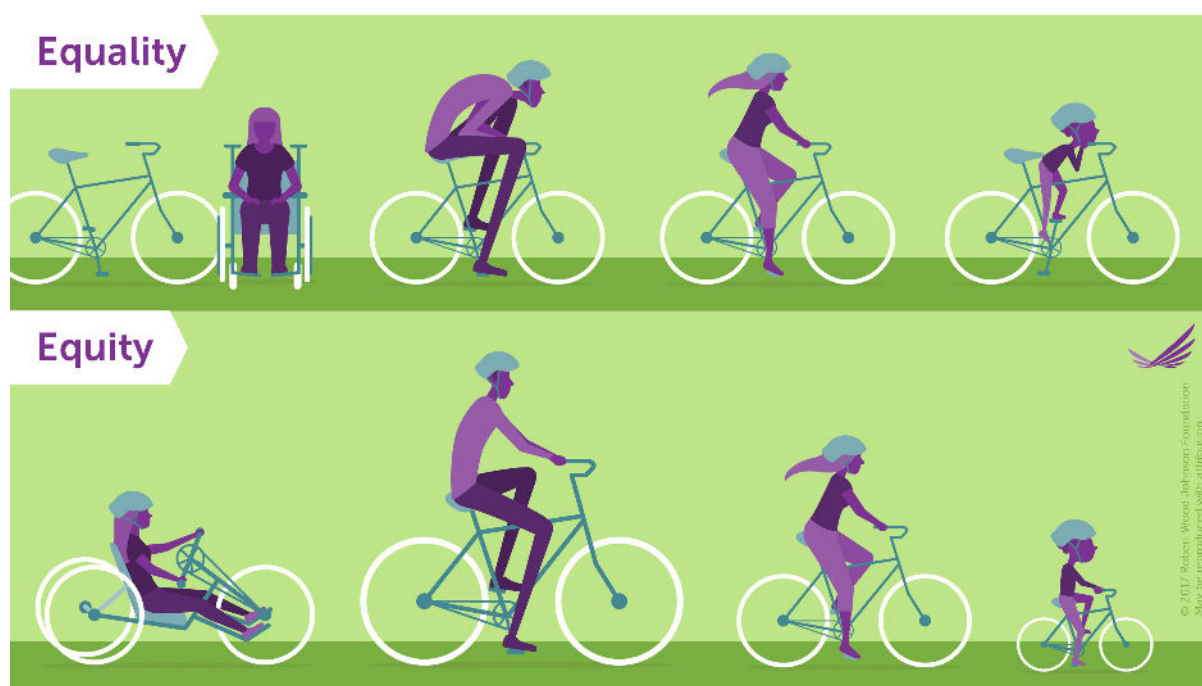
Part 2 delves into some overarching social equity considerations, and **Part 3** into social equity considerations specific to each forest level.

Apart from a description of social equity issues, most slides also include case-studies and a 'Resources' section that links to tools, guidance, and research on how these issues can be addressed.

PART I: KEY SOCIAL EQUITY CONCEPTS AND BACKGROUND

4. Social Equity Concepts

For the purpose of this guide, **social equity** is defined as the absence of avoidable or remediable differences among groups of people, whether those groups are defined socially, economically, demographically, or geographically.¹⁰⁴ Equitable processes call for acknowledging that individuals or groups may have unequal starting points and require different levels of support based on their specific needs to achieve fairness in outcomes.²⁴ Equitable and just processes need to be applied in pursuing **equality**, which is the state of all groups being equal in rights, status, and advantages.



“Equality” in processes would mean giving the same support to all individuals, overlooking their specific needs; “Equity” in processes would mean providing different support to different individuals based on their needs to reach a fair outcome. Image: [Robert Wood Johnson Foundation](#).

This guide focuses on various aspects of social inequity, including but not limited to those stemming from **gender** **i**, **class** **i**, **caste** **i**, ethnicity/race/indigeneity, age, educational status, geographic location, migrant status, disability, or religion. We give special attention to gender inequity, given the pervasive nature of the issue across sectors and locations and within socioeconomic groups, and its tendency to be sidelined or ignored in the broader conversation on social equity.

Social equity issues vary depending on the social, economic, and political contexts of cities, and approaches to address these issues should be adapted by decision makers accordingly.

i Gender: The social attributes and opportunities associated with expressing as male, female, or non-binary and the relationships between and among them, in conjunction with other characteristics such as age, race, class, and/or other expressions of identity. These attributes, opportunities, and relationships are socially constructed, and can change over context and time. (adapted from [UN Women](#) ⁸⁶) Depending on the context, information on “sex” may be used to collect information on gender outcomes. For instance, “sex-disaggregated data” analyzed with other demographic variables and socioeconomic indicators may identify gender gaps and patterns of social disparities.

i Class: Social groups’ standard of living as defined by their household income, wealth, and consumption in terms of nutrition, education, and health services, language proficiency etc. (adapted from [ILO](#) ⁵²). Sub-categories may include upper/elite class, middle class, and working class. People’s socioeconomic status is a reflection of what they can or can’t do based on their class.

i Caste: A complex form of stratified social hierarchy, often referring to a system of social stratification in Hindu India (Adapted from the [Oxford Dictionary of Sociology](#)).

Resources:

[Inclusion Matters – The foundation for shared prosperity](#) | World Bank ¹⁰⁵
[Concepts and Definitions](#) | UN Women ⁸⁶

5. Processes to Enhance Social Equity

Processes to enhance social equity through policies and projects can range from **mitigating potential harm**¹⁷ to vulnerable populations, to advancing their social and economic status directly through policies and programs. This will look different in different cities and forests, depending on the local context.

Adopting a social equity lens early on and iteratively throughout the planning of a policy or project can ensure that equity outcomes are well integrated and budgeted for. Not all policies or projects may have the resources needed to achieve social equity or empowerment. In these cases, decision makers can aim for incremental changes — from avoiding being **socially blind** ⓘ or **socially exploitative** ⓘ to being **socially accommodating** ⓘ or even **socially transformative** ⓘ.

For example, when practitioners work with communities, they can choose methods that intentionally involve diverse stakeholder groups and that hold space for their opinions, needs, and knowledge before/during the project implementation. This is better than merely informing or consulting with them.*

INCREASING IMPACT ON THE DECISION

	Inform	Consult	Involve	Collaborate	Empower
Public Participation Goal	To provide the public with balanced and objective information to assist them with understanding the problem, alternative, opportunities, and/or solutions.	To obtain public feedback on analysis, alternatives, and/or decisions.	To work with the public throughout the process to ensure that public concerns and aspirations are consistently understood and considered.	To partner with the public in each aspect of the decision including the development of alternatives and the identification of the preferred solution.	To place final decision making in the hands of the public.
Promise to the Public	We will keep you informed.	We will listen to and acknowledge concerns and aspirations and provide feedback on how public input influenced the decision.	We will work with you to ensure that your concerns and aspirations are reflected in the alternatives developed and provide feedback on how public input influenced the decision.	We will look to you for advice and innovation in formulating solutions and incorporate your advice and recommendations into the decision to the maximum extent possible.	We will implement what you decide.

Public participation methods. Image: [Cities4Forests, 2020](#). Adapted from [International Association for Public Participation \(IAP2\)](#).

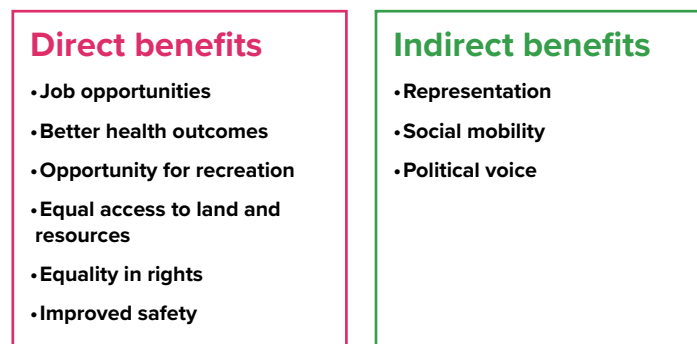
- ⓘ **Socially blind:** Approaches that do not see social equity as something important to consider; assumes that if something works for one group, it will work for everyone (USAID⁹²).
- ⓘ **Socially exploitative:** Approaches that take advantage of existing inequalities, behaviors, and stereotypes in pursuit of project objectives. They reinforce unequal power in the relations between men and women or other social groups and potentially deepen existing inequalities (USAID⁹²).
- ⓘ **Socially accommodating:** Approaches that work around social differences, norms and inequities, and meet people where they are to achieve project outcomes. They do not attempt to reduce the social differences, but also do not exploit or exacerbate them (USAID⁹²).
- ⓘ **Socially transformative:** Approaches that explicitly engage all social groups to examine, question, and change institutions and norms that reinforce inequalities, and as a result achieve greater social equity through project objectives (USAID⁹²).

*See the section on [Meaningful Stakeholder Engagement](#) for more information.

6. Social Impacts of Equitable Policies and Programs

In communities everywhere, certain groups may be more vulnerable to adverse health, water, or climate impacts, for example due to greater exposure to air and water pollutants or less access to protective infrastructure. Almost one billion people in the world live in urban slums, and every fourth urban resident lacks access to improved water, sanitation, and durable housing, heightening their vulnerability to adverse health, water, or climate issues.⁷⁶ Indigenous Peoples and local communities hold rights to more than half of world's land mass, but legally own only 10 percent of the world's land.⁷⁸ These and other at-risk groups will not be able to benefit equitably from nature-based solutions that can improve health, provide refuge from heat or extreme weather, and improve access to water services.

When social equity considerations are meaningfully incorporated into policies and plans, vulnerable communities can gain many **direct and indirect benefits**.^{63, 102, 111}



Some direct and indirect benefits of equitable policies and programs. Image: [Cities4Forests, 2020](#).

For instance, the 'One Soul One Tree'¹⁰⁰ campaign in Surabaya, Indonesia, launched by Mayor Rismaharini after her election in 2010, helped achieve twin goals of enhancing city forests and creating alternative means of income for local residents. It protected 5,000 mangrove trees and encouraged residents to harvest syrup and create products using the trees.

In Africa, the **Green Belt Movement**³⁸ offers an example that combines forest restoration with community empowerment, particularly of women, to conserve the environment and improve livelihoods. The Green Belt Movement provides women with new income-generating and training opportunities, and includes them in planning and project activities related to climate mitigation and adaptation.



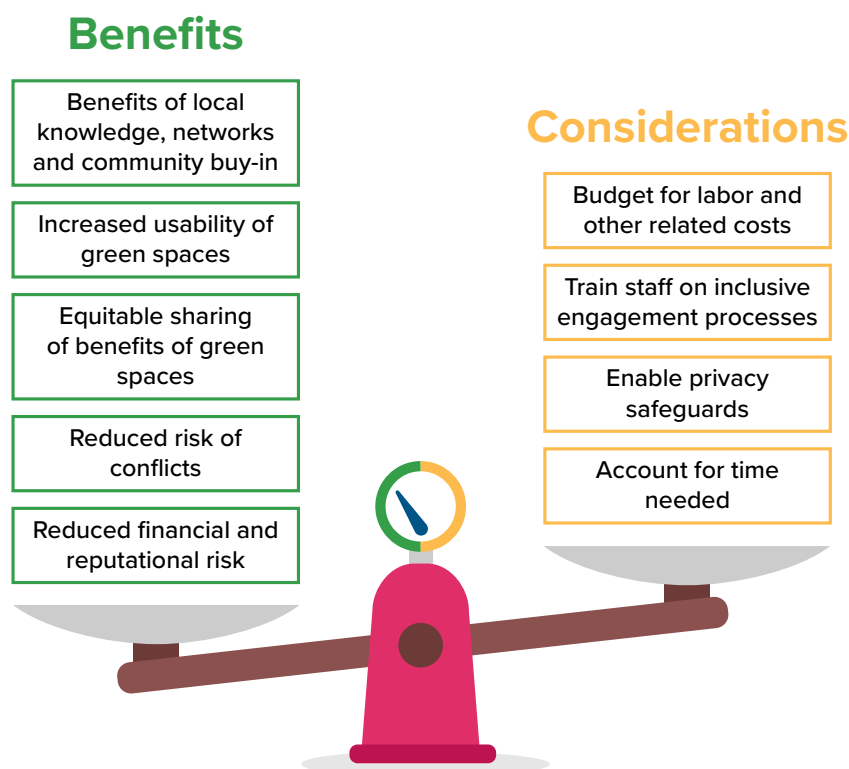
Green belt movement safari. Photo: [kasuga sho, Flickr](#).

7. Other Benefits and Considerations for a Social Equity Approach

Apart from improving socioeconomic outcomes, adopting a social equity approach may also lead to more efficient and sustainable project outcomes.^{87, 89, 103}

When forest-related services are designed considering everyone's needs, they can benefit from improved usability⁸⁹, especially services that rely on user fees or public participation for maintenance. Solutions that integrate the voices and recognize the rights of marginalized groups like women and indigenous people can also benefit from their local knowledge and social networks.^{7, 56} Incorporation and acknowledgement of local and traditional "know-how" can further lead to better decisions for forest governance and conservation.⁷⁸

Meaningful engagement with local communities, while recognizing their rights according to the local context, can create stronger community buy-in and better harmonization of interests and plans, reducing the risk of conflicts and reputational and financial losses in the future.⁴⁶ Cities can conduct cost-benefit analyses and proper budgeting to evaluate the resources required to engage in inclusive and equitable processes. For instance, engaging hard-to-reach groups can be lengthy and resource-intensive, and might involve costs for per diems and travel allowances, translation services, provision of child-care for participating women, and capacity building for stakeholders and staff. Officials should put in place adequate privacy and safety measures for stakeholders, and free, prior and informed consent should be secured during data collection processes.*



Benefits and considerations for a social equity approach. Image: [Cities4Forests, 2020](#).

*See the section on [Meaningful Stakeholder Engagement](#) for more information.

PART II: OVERARCHING SOCIAL EQUITY CONSIDERATIONS

8. Policy Commitments for Social Equity

Addressing social equity issues may require measures that compensate for historical disadvantages of marginalized or vulnerable groups.



Steps to inclusive and equitable climate policy. Image adapted from: [C40 Inclusive Planning Executive Guide](#).

To this end, **green policies can include equity goals and policy commitments** that are:

- **Transparent:** Equity goals that clearly designed to communicate the objectives, costs, and benefits of the policies or programs to all stakeholders, including local communities.
- **Inclusive:** Equity goals that promote equitable sharing of costs and benefits and seek to engage with communities in the planning and implementation processes.
- **Evidence-based:** Equity goals that target specific needs of communities and can be informed by gender and social assessments, and include tracking whether the policies or programs meet those needs.^{14, 12, 16}

[C40 Climate Action Planning Resource Centre](#)¹⁵ provides additional resources and check-lists on designing equitable and inclusive policies.

According to [National Recreation and Park Association](#)⁶⁶ of the United States, only 40% of U.S. park and recreation agencies have a formal inclusion policy or goal. Portland, Oregon's [Urban Forest Management Plan 2003](#)⁷³ explicitly includes spatial equity as one of its key goals and recognizes that "The urban forest is unevenly distributed. Economically disadvantaged neighborhoods often have fewer trees than more wealthy areas."

Resources

[Investing in Equitable Urban Park Systems](#) | Urban Institute, 2019³⁰

[Parks for Inclusion Policy Guide](#) | Initiatives | National Recreation and Park Association⁶⁸

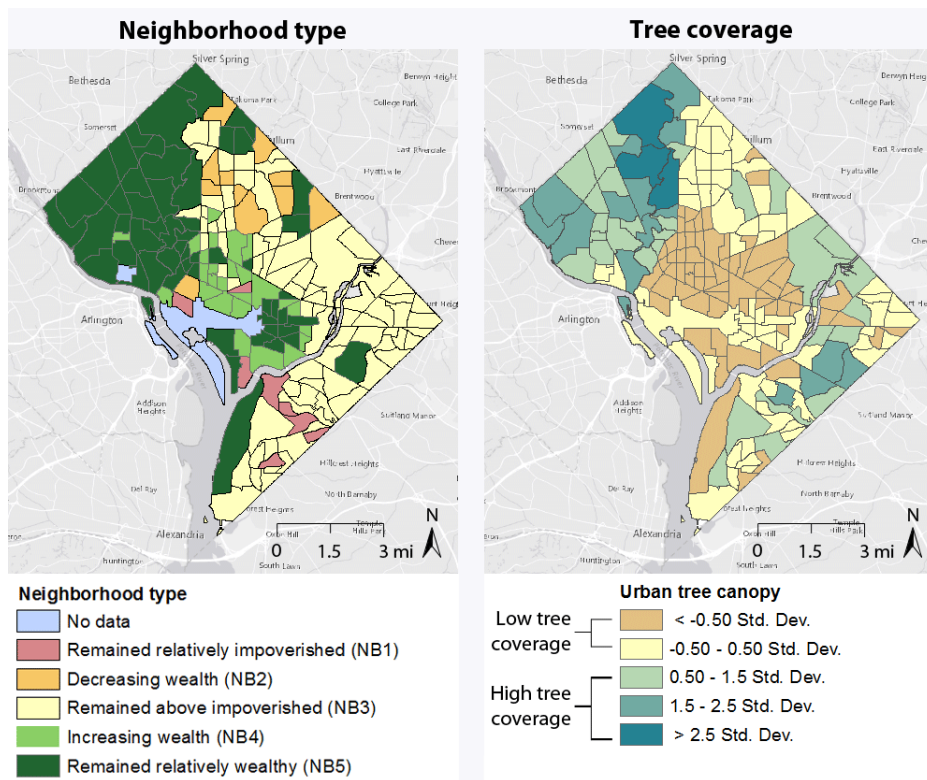
[Climate Action Planning Resource Centre](#) | C40, 2019¹⁵

[Equity Tool Kit](#) | 11th Street Bridge Park, n.d.¹

9. Use of Socioeconomic Information

Incorporating disaggregated socioeconomic information while planning, designing, analyzing, and budgeting forest-related programs can help ensure an understanding of differential social and economic impacts, costs, and benefits. Data may include demographic data, qualitative research, land ownership data, and crime and safety statistics, with due consideration of data privacy and anonymity. The [Green Bond Report](#)⁸⁰ from San Francisco’s Public Utilities Commission (Water Enterprise, 2018-19) provides an example of how social impacts of projects can be monitored. The annual report focuses on the social impacts that their policies and programs achieved in the past year, including specific benefits to local communities.

Vibrant Cities Lab’s [“Where to Plant and Why”](#)⁹⁷ provides more ideas on using social information for equitable planning, especially while mapping and siting. The government of King County, Washington (U.S.) [systematically overlaid social data sets](#)¹⁰¹ like health and education metrics, disaggregated by race and region, and ethnic minorities’ proximity to parks to better understand the distributional and equity impacts of public investments in community amenities such as parks and trails. This helped the county identify the need to set aside funding to further develop the underserved South Country Trail System.



Washington D.C.’s distribution of urban canopy as related to wealth of neighborhoods shows that relatively impoverished neighborhoods have lower tree coverage than those relatively wealthy. Image: [Casey Trees](#), adapted from: [Chuang et al. 2017](#).¹⁸

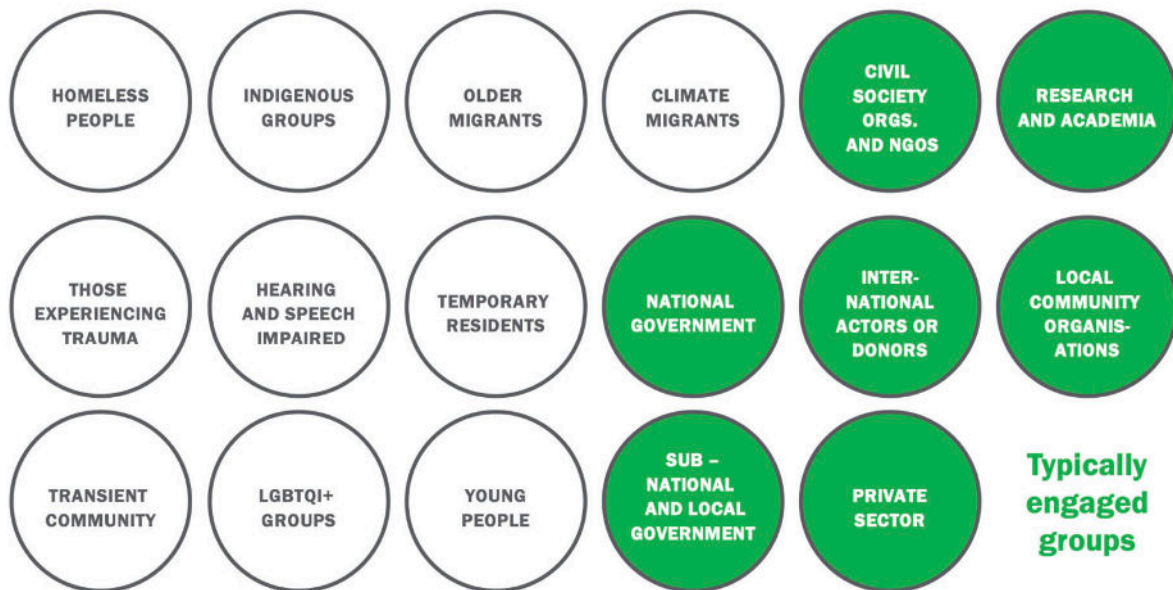
Resources

- [Investing in Equitable Urban Park Systems: Case Studies + Recommendations](#) | City Parks Alliance, 2020¹⁹
- [Developing a green infrastructure equity index to promote equity planning](#) | Heckert, M. & Rosan, C. D., 2016⁴⁵

10. Stakeholder Identification

Conducting thorough **social analyses** ^①, which may include gender analysis, social impact assessments, and vulnerability assessments, can help **identify and include all relevant stakeholders, especially the most vulnerable**. In some cases, it might be especially important to identify historically marginalized groups such as those living in informal housing, squatters, indigenous people, or women performing unpaid labor. These may be some of the most vulnerable groups and at risk of bearing unintended negative outcomes from programs and policies. ^{42, 47}

Typically hard-to-reach groups



Typically hard-to-reach groups. Image: C40's Playbook on Inclusive Community Engagement.

Policy effects usually vary across different groups. A social analysis can highlight power asymmetry and dynamics between stakeholder groups and within them. For instance, in Brazil's Galileia community in the middle of the Amazon, a [Social Landscapes Mapping exercise](#) ¹⁰ showed that men and women accessed information differently. Women received information from secondary sources such as elders, children, the church, and community leaders, whereas men communicated directly with organizations providing information. This analysis, conducted to understand how best to spread forest and landscape restoration practices, emphasized the importance of communicating through different channels such as radio and brochures to improve women's knowledge around the restoration process.

① Social analyses: A social analysis is a process designed to identify the social dimensions of projects and policies by analyzing stakeholders' perspectives. It asks: Who is likely to benefit from the decisions? Who may be adversely impacted? How and why are these groups going to be positively or negatively impacted?



Mapping social landscapes in Kenya. Photo: Aaron Minnick, WRI.

Resources

Mapping Social Landscapes Guide | World Resources Institute, 2018¹⁰

Gender Analysis | European Institute for Gender Equality, n.d.²³

Gender Tool Box | Swedish International Development Cooperation Agency, 2015⁸³

Gender Analysis Guidelines | Department on the Status of Women, City and County of San Francisco, n.d.²⁵

Social Impact Assessment | International Association for Impact Assessment (IAIA), 2015⁹³

Urban Climate Resilience Assessment in Vulnerable Neighborhoods (UCRA) | World Resources Institute, 2018²⁵

Comprehensive Food Security and Vulnerability Analysis Guidelines | World Food Programme, 2009¹⁰⁷

Guidelines for a Gender Sensitive Participatory Approach | International Centre for Integrated Mountain Development (ICIMOD), 2009⁴⁰

Playbook: Inclusive Community Engagement | C40 Cities, 2019¹³

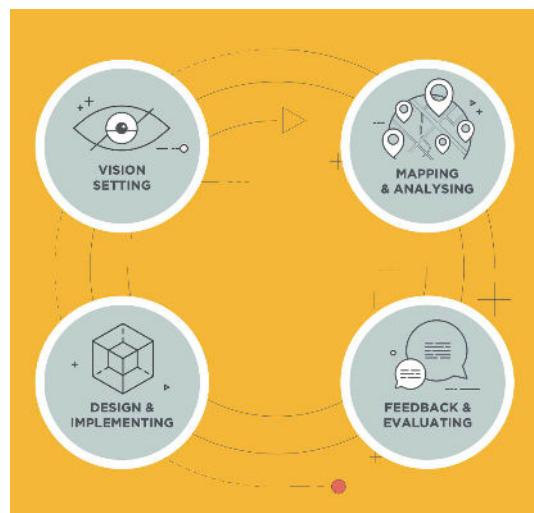
11. Meaningful Stakeholder Engagement

When not engaged in plans and policy development, local communities and vulnerable groups can be left out of the intended benefits or be negatively impacted. For instance, a WRI project with the [Gatsibo District's office](#)⁹ in Rwanda to understand local seed and seedling distribution networks found that farmers were not getting the seedlings they wanted, leading to a lack of interest in the forest and landscape restoration movement. This could have been avoided if the farmers were engaged in the planning and decision-making processes from the beginning.

Inclusive and meaningful **stakeholder consultation** entails:

- Starting early in the project, and creating multiple, iterative opportunities for engagement and dialogue
- Securing free, prior and informed consent when applicable
- Actively overcoming barriers like cost, illiteracy, lack of official documentation, asymmetric information, exclusionary institutions, and discriminatory norms. For instance, World Bank projects have had to make special efforts to include poor women in [Nepal](#)¹⁰⁶ in project planning. These women were usually not consulted in participatory decision-making on community forests because of prevalent social norms like women not being allowed to sit with men and being shut down by male participants during discussions.
- Ensuring that all stakeholders' opinions are heard and appropriately incorporated into the plans. In the case of a conflict of interests, thoughtful negotiation and conflict resolution may be required to come to a common decision that works for everyone.

These principles also apply to **resident and community engagement** activities to promote the benefits of urban forestry projects, which should be a two-way, collaborative dialogue between residents and officials with tailored outreach to different groups.²⁴ This can also help identify local groups' knowledge, experience and willingness for involvement.



Cumulative (iterative) Process for Community Engagement.
Image: [C40 Inclusive Community Engagement Guide](#).

In [Porto Alegre and Rio de Janeiro, Brazil](#)³¹, 200 household surveys helped shape the cities' responses towards urban flooding. The same methodology (Urban Community Resilience Assessment) is being implemented by the Cities4Forests team in Kochi, India to help build a resilience roadmap for urban forestry projects.

12. Equal Employment Opportunities

Groups such as ethnic minorities, women, migrant communities, or those formerly incarcerated may also be excluded from equal employment opportunities due to **implicit biases** ¹ in hiring practices. This presents a barrier to designing equitable, inclusive projects to advance urban forestry and nature-based solutions. Programs such as those launched by the state forest service in [Baltimore \(Maryland\)](#) ⁹⁵ and [Philadelphia \(Pennsylvania\)](#) ⁹⁶, U.S. provide targeted training and can help boost these groups' career opportunities in this field.

Women are often underrepresented in the parks and forest service workforce given that these are traditionally male-dominated industries, and may be pushed into under-paid activities. Women can face threats of sexual violence and harassment in this sector, especially when they may need to work in remote, isolated places. Safety precautions, policies around behavior expectations and sensitizing men, and implementation of strict accountability measures are necessary. Sponsorship, mentoring programs, and family-friendly policies also help advance women's roles in the workplace. ^{3,17}

Identifying any structural barriers to the hiring or retention of disadvantaged groups in various capacities may include taking stock of the current diversity of the workforce, training teams to create an inclusive workspace, and creating a safe redressal mechanism for any complaints.

1 **Implicit biases:** Having a preference for (or aversion to) a person or group of people, or associating stereotypes with them, without conscious knowledge. (adapted from [Perception Institute](#) ⁷⁰).

Resources

Women in urban forestry and arboriculture: Experiences, barriers and strategies for leadership |

Bardekjian et al, 2019 ⁵

Urban Forestry Toolkit (Equity) | Vibrant Cities Lab ⁹⁸

Promoting Gender Equitable Opportunities in Agricultural Value Chains: A Handbook | The United States Agency for International Development (USAID), 2009 ⁹¹

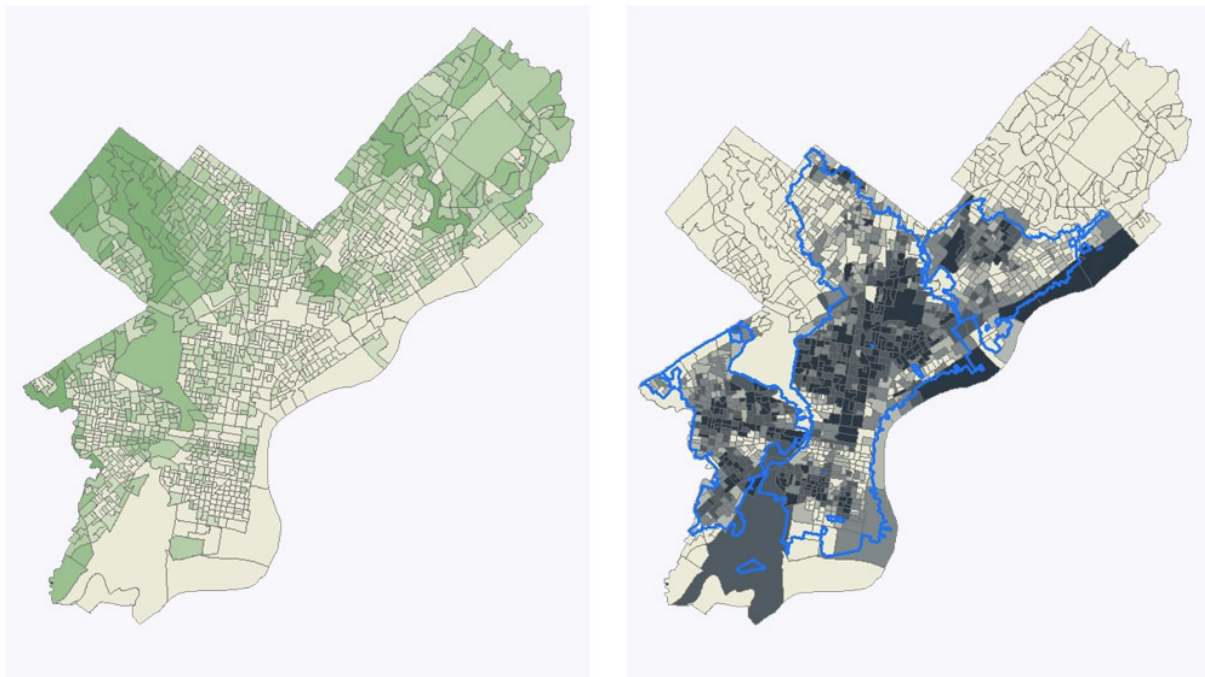
Gender and Racial Diversity in Environmental Organizations: Uneven Accomplishments and Cause for Concern | Dorceta E. Taylor, 2015 ²⁷

Time for Action: Changing the Gender Situation in Forestry | Food and Agriculture Organization of the United Nations (UN FAO), 2006 ⁸⁵

PART III: SOCIAL EQUITY CONSIDERATIONS FOR EACH FOREST LEVEL

13. Equity in Spatial Distribution of Inner Forests

Studies synthesized by [Vibrant Cities Lab](#)⁹⁹ show that urban tree cover may be correlated with existing social and economic inequalities. Neighborhoods with higher incomes, education levels, home ownership, and populations of majority ethnic groups may have higher proportions of tree canopy cover. This furthers the economic and social divide between communities, as the groups that are most in need of forest benefits like shade are deprived access to them.



Maps of Philadelphia Showing the Sparse Distribution of Green Spaces in Predominantly Low-Income Areas. Image: [EPA/ EJ Screen](#).

Studies from [Guangzhou \(China\)](#)¹¹² and [Philadelphia \(U.S.\)](#)⁴⁵ show how creating an equity index can help achieve equity in the spatial distribution of green infrastructure. However, if planning and implementation ignore socioeconomic conditions, well-intentioned actions may in some cases result in ‘green gentrification.’ For example, an investment in new street trees for a poor neighborhood could drive up property values, squeezing out lower income residents.*

Along with spatial equity, **equitable access to a bundle of rights**, such as the rights to trees, water, and benefits provided by inner forests should also be considered. Additionally, **resources to implement and maintain green infrastructure projects** in socio-economically disadvantaged areas may also be important to consider. For instance, homeowners may be more incentivized to maintain street and yard trees than short-term renters or rental property owners.



Medellin, Colombia. Image: Reg Natarajan/ Flickr

Resources

Urban Forestry Toolkit (Equity) | Vibrant Cities Lab ⁹⁸

Environmental Justice | Community Commons ²¹

Tree Equity Career Pathways Action Guide | American Forests and Vibrant Cities Lab ⁹⁴

The dimensions of urban green equity: A framework for analysis | Nesbitt et al. 2018 ⁶⁹

*See section on [Affordability](#) for more information.

14. Land Use in Inner Forests

Spatial land use analyses are frequently used in plans to protect, manage, and restore forests. **Complementing these with social analyses*** can help gather additional information on who uses the land and how. In some cases, this may involve identifying informal or extra-legal users of the land, like slum-dwellers and squatter groups, or displaced and migrant communities whose land tenure rights may be constrained. These may be some of the most at-risk groups given their lack of resources or vulnerability due to factors like race, ethnicity, education, etc. In **Mumbai, India**²⁸, for example, governmental action to protect mangrove forests resulted in the destruction of slums, whereas high-end development continued to be allowed in mangrove areas.

Failing to apply a social equity lens to land use decisions can risk inefficient decision making for tree stewardship or site selection for parks and other green spaces. Consider **urban greening efforts in Detroit, U.S.**⁶¹: Between 2011-2014, 24% of residents contacted refused to plant trees on their streets as a part of a local non-profit organization's initiative because "they were left out of the decision-making process" and distrusted relevant authorities in the community.



The image is a screenshot of a CityLab news article. At the top left is the CityLab logo. To the right are navigation links: DESIGN / TRANSPORTATION / ENVIRONMENT / EQUITY / LIFE. Below the navigation is a search icon. The main image shows two people, John Kost and Barry Johnson, planting a tree in a field. Below the image is a caption: "John Kost, left, and Barry Johnson, citizen foresters for the nonprofit group The Greening of Detroit, plant a tree in the Osborn neighborhood in Detroit in 2016. // Carlos Osorio/AP". The article title is "Why Detroit Residents Pushed Back Against Tree-Planting" by Brentin Mock, dated January 11, 2019. A quote from the article reads: "Detroit residents were refusing city-sponsored 'free trees.' A researcher found out the problem: She was the first person to ask them if they wanted them."

Residents push back on tree planting. Source: screenshot of [CityLab News Article](#) about Detroit's failed tree planting.

Resources

- [Know Your City](#) | Slum/Shack Dwellers International (SDI)⁸¹
- [Mapping Social Landscapes Guide](#) | World Resources Institute, 2018¹⁰
- [Where to Plant and Why](#) | Vibrant City Labs⁹⁷
- [Roadmap for Inclusive Planning](#) | C40, 2019⁷
- [Handbook for Preparing a Resettlement Action Plan](#) | International Financial Corporation (IFC), 2002³²

*See Slide on [Use of Socioeconomic Information](#) for more details.

15. Affordability Considerations in Inner Forests

Installation and maintenance of green infrastructure may involve **high costs**, which communities may not be able or willing to pay. Additionally, while upgrading and expanding inner forests can benefit some residents by increasing real estate prices, **“green gentrification”** may unintentionally outprice low-income residents and businesses.⁴³

Depending on the context, cities can address these issues through interventions such as:

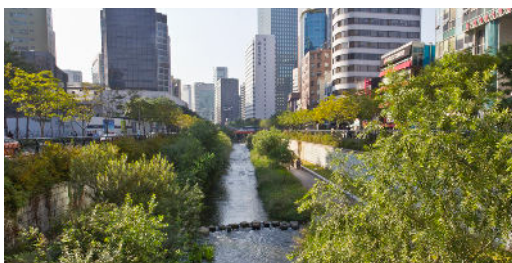
- Engaging low-income residents in the design of the projects to cater to their needs and preferences.
- Identifying and responding to the needs of underserved communities, for instance, by creating employment opportunities and affordable housing for low-income residents. This may lead to additional socioeconomic benefits, such as in the case of **eThekweni Municipality’s**³³ restoration project at Buffelsdraai in South Africa, where local impoverished communities benefitted from improved schooling, transport, and food supply in the first two years of the project.
- Calculating costs and benefits to all groups involved, especially low-income populations.
- Conducting negotiations for compensating the cost-bearers or subsidizing their economic burden.

C40’s Roadmap for Inclusive Planning¹⁶ sheds light on other key affordability and equity challenges to urban green infrastructure.



Following the redevelopment of the High Line in New York City, housing prices climbed by 103 percent between 2003 and 2011—even during a period of economic downturn.¹⁰²

Photo: Allison Meier, Flickr.



In Seoul, South Korea, the ecological restoration of the Cheonggyecheon Waterway led to an increase in property values and shift in land use from industrial to commercial, serving more affluent stakeholders.¹⁰²

Photo: Kaizer Rangwala, Flickr.



Washington D.C.’s **11th Street Bridge Park Project**⁸, scheduled to be completed in 2023, set up a community land trust, made affordable housing investments, and prioritized training and park jobs for low-income residents. One million U.S. dollars have also been earmarked for small business development, including for micro-loans and technical assistance.

Image: Urban Institute.

Resources

Roadmap for Inclusive Planning | C40, 2019¹⁶

Investing in Equitable Urban Park Systems | Urban Institute, 2019³⁰

Pathway to Parks & Affordable Housing Joint Development | LA THRIVES and Los Angeles Regional Open Space and Affordable Housing (LAROSAH), n.d.¹¹⁰

16. Accessibility and Safety Considerations in Inner Forests

Like other public spaces, it is important to **design inner forests to meet the needs of all users, including women, the disabled, the elderly, and children.** Gathering information from these groups or conducting safety audits will help respond to their specific needs, such as infrastructure needs like lights, benches, ramps, and restrooms.⁴²

Simultaneously, it is important for city leaders to have plans in place to limit actions that discourage potential harmful uses, such as drug dealing and crime.⁶²

Fear of Crime



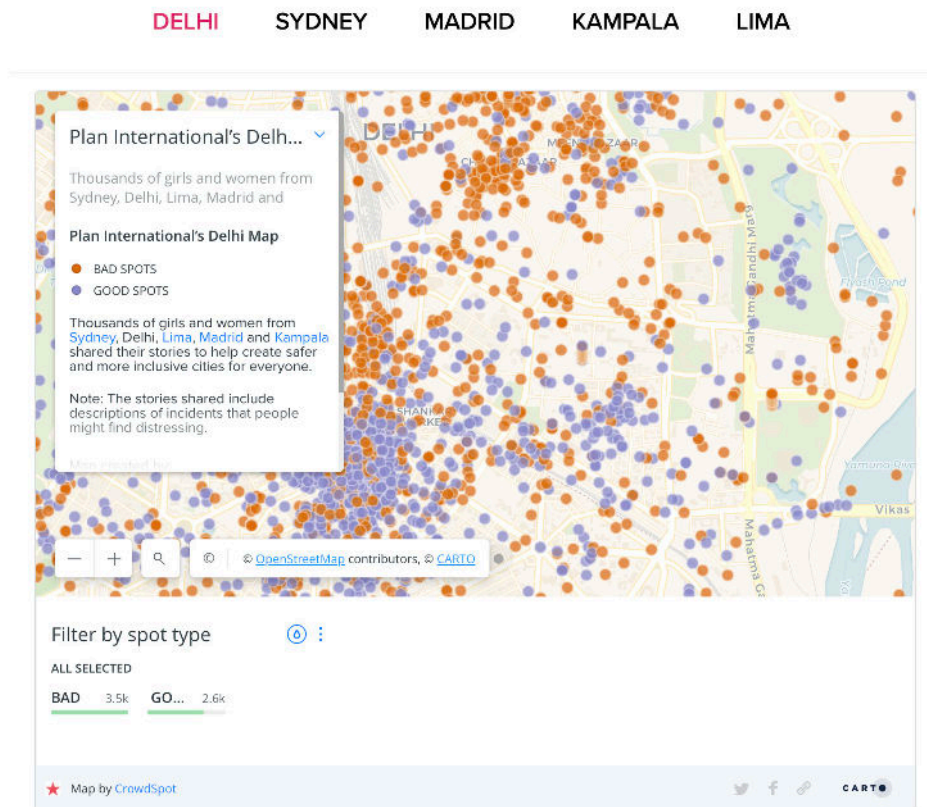
Dark, dense forests may be perceived as a place for criminals to hide, and may cause psychological distress due to fear of crime, in women, the elderly, and other groups.

Regular maintenance, and the addition of lights may reduce fear of crime. Removal of dense shrubs at eye-level near trails may also help.



Potential accessibility and safety-related design elements may include benches, clearer pathways, fewer dense bushes, restrooms, etc. Image: [Cities4Forests](#).

Studies have shown that the type, density, and maintenance of vegetation affect perceived personal safety, which includes fear of crime and violence, varying by the gender, age, and socioeconomic status of the users.^{4,51} A [mapping activity](#)⁷² conducted by Plan International in 2018 revealed that in Delhi, Sydney, and Madrid, women perceived urban parks comprised 20% of all unsafe public spaces, characterized by the incidence of physical and sexual assault.



Example of a mapping exercise. Source: [Plan International](#).

Resources

Best Management Practices for Crime Prevention Through Environmental Design in Natural Landscapes | Green City Partnerships, 2019³⁹

Building Safe and Inclusive Cities for Women: A Practical Guide | Jagori, 2011⁴⁹

Parks for Inclusion Resources | National Recreation and Parks Association (NRPA)⁶⁸

Creating Safe Park Environments to Enhance Community Wellness | National Recreation and Parks Association (NRPA), n.d.⁶⁷

17. Ecotourism and Recreation in Nearby Forests

Activities in nearby forests such as watershed management, ecotourism, and recreational services can provide co-benefits such as new employment opportunities to forest-reliant communities. However, when communities are not engaged in decisions, it may endanger their access to the watershed's resources or ability to utilize non-timber forest products and services.^{2,111} Kenya Forest Service provides a positive example through their [Participatory Forest Management Plans](#)⁵³, which have guidelines on local community engagement and allows for them to harvest honey, grass, fuel wood, and medicinal herbs in forest areas with ecotourism programs.



Ecotourism's effects on local communities, conservation and policy & planning¹¹¹. Image: [Daniel A. Zacarias, Researchgate](#).

In some cities, access to ecotourism and recreation may be affected by costs related to gear, equipment, and travel.⁶² The government can potentially alleviate these challenges by partnering with private entities and introducing subsidized recreational programs targeting low-income communities.

Resources

[How Ecotourism Affects Human Communities](#) | Zacarius and Loyola, 2017¹¹¹

[Guidelines for Community-based Ecotourism Development](#) | WWF¹⁰⁹

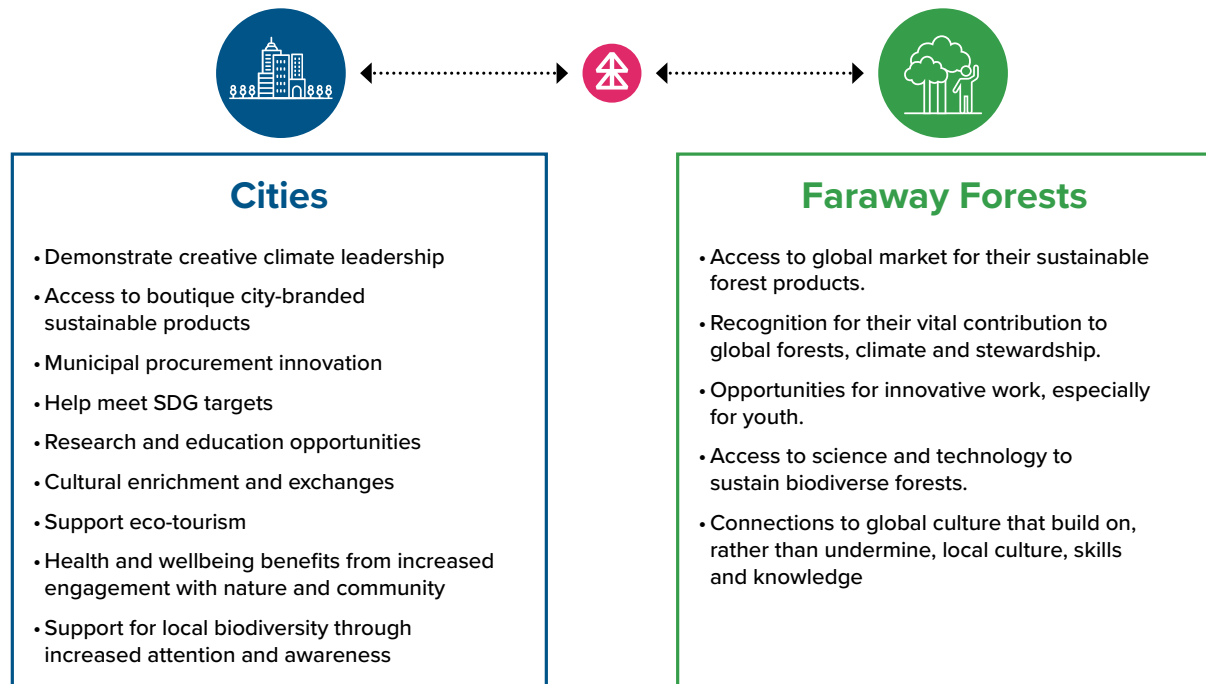
[Gender-Responsive Toolkit on Ecotourism Planning and Management](#) | Philippine Commission on Women⁷¹

[A Toolkit for Monitoring and Managing Community-Based Tourism](#) | SNV and University of Hawaii⁸²

[Linking Communities, Tourism & Conservation: A Tourism Assessment Process](#) | Conservation International, GWU, USAID⁴¹

18. Cities' Engagement with Faraway Forests

Forests located far from major cities include some of the most essential ecosystems for supporting life on earth. Cities and faraway forests can have a mutually beneficial relationship.



Mutually beneficial relationship between cities and faraway forests. More on this at <https://cities4forests.com/forests/>.
Image: [Cities4Forests, 2020](#).

A city or municipal government's political and financial support of faraway forests can be an important way to mitigate deforestation, climate change, and biodiversity loss. Cities' political support can include advocacy and support for the protection of local rights to forest resources. For instance, cities could use their political capital and resources to support policies such as [the Forest Rights Act in India](#)⁶⁰, a piece of landmark legislation that seeks to reverse historical injustice towards tribal and other traditional forest dwellers, and recognizes and vests their right to forests and ensures support for their livelihoods.

Cities' financial support for faraway forests may include providing access to markets for the sale of certified products, including sustainable wood for city infrastructure. City governments can also foster ecotourism programs, meet their climate commitments, and broaden communication campaigns to raise their residents' awareness of forest-related benefits.

The next two slides describe general social equity considerations pertinent to faraway forests that city-level decision makers should be aware of, followed by a slide specifically on how city-level decision makers can practice equitable procurement to advance the socioeconomic wellbeing of relevant communities.

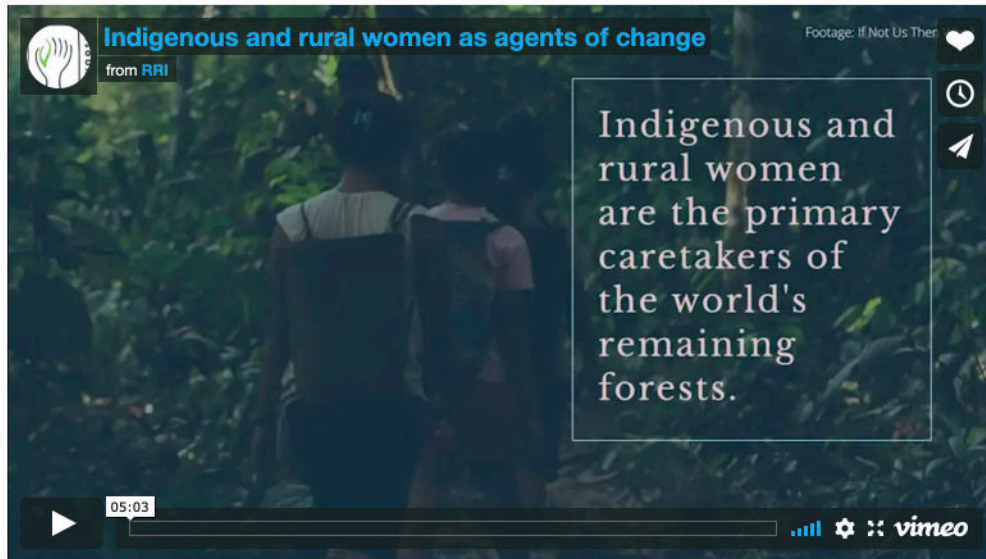
19. Community Forest Management in Faraway Forests

Indigenous people and local communities can be some of the most effective stewards of natural resources when given adequate support and agency.²⁶ This may include affirming their tenure rights and establishing enabling conditions that ensure tenure security. In Ethiopia, the [Land Investment for Transformation](#)⁵⁹ program provides special support to women who are vulnerable to dispossession of land due to widowhood, divorce, and lack of documentation, among other reasons.



Community chief and members in Peru's forests. Photo: [CIFOR](#), [Flickr](#).

For projects and policies on managing, protecting, and conserving forest and water resources, including representatives from all identified stakeholder groups in the forest's community management is important. Including these groups can make for better decision-making, and improve local livelihoods and protect forests. For instance, studies from [Kenya](#), [Uganda](#), [Bolivia](#), and [Mexico](#)⁶⁴, show that when both men and women participate in forest user groups, the user groups are more likely to adopt behaviors that enhance the forest's resources.



Indigenous and rural women as agents of change. Source: [Rights and Resources Institute](#)

In the [Solomon Islands](#)²⁹, even when women were included in community meetings, they were consistently less likely than men to speak up and substantively participate. This pointed towards the need for different types of support for proper stakeholder engagement, including holding meetings at times that are compatible with family schedules, providing child-care services, and covering wages for the day.*

Resources

Mapping Social Landscapes Guide | World Resources Institute, 2018¹⁰

Gender Analysis | European Institute for Gender Equality, n.d.²³

Gender Tool Box | Swedish International Development Cooperation Agency, 2015⁸³

Gender Analysis Guidelines | Department on the Status of Women, City and County of San Francisco, n.d.²⁵

Meaningful Stakeholder Consultation | Inter-American Development Bank, 2017⁵⁴

Guidelines on Free, Prior and Informed Consent | The United Nations Programme on Reducing Emissions from Deforestation and Forest Degradation (UN REDD), 2013⁵⁵

Guidelines for a Gender Sensitive Participatory Approach | International Centre for Integrated Mountain Development (ICIMOD), 2009⁴⁰

LandMark | World Resources Institute¹⁰⁸

Power and Potential: A Comparative Analysis of National Laws and Regulations Concerning Women's Rights to Community Forests | Rights and Resources Initiative, 2017⁷⁷

*See section on [Stakeholder Identification](#) and [Meaningful Stakeholder Engagement](#) for other resources.

20. Faraway Forest Protection and Use Policies

People living in and near forests may be extremely poor and might traditionally rely on the forest for their livelihoods, nutrition, and spiritual practices. Strict forest conservation and protection policies may restrict their access to forested areas and forest products, lowering their income and wellbeing outcomes.⁷⁴ For instance, in [Madagascar's Ankeniheny-Zahamena Corridor](#)⁷⁴, conservation restrictions and inadequate compensation distributed to forest communities resulted in households losing 27-84% of their total annual income after the protection policies were put in place.

Policymakers can mitigate negative impacts on communities by maintaining access to ecosystem services, providing adequate compensation, or introducing new livelihood options.⁷⁵ *



Community member near protected forest land in Colombia. Photo: [James Anderson, WRI Flickr](#).

A [global study](#)⁶⁵ showed that households that were allowed employment opportunities in ecotourism services near protected forests had lower poverty and malnutrition rates, with no negative impacts to forest outcomes, compared to households living near strictly protected forests.

*These decisions should be taken when all stakeholders are effectively engaged – see section on [Meaningful Stakeholder Engagement](#) for more information.

21. Promoting Social Standards in Procurement

Instruments like forest sustainability certifications and eco-labeling can help identify sustainable sources of forest products and thereby forest conservation. However, high costs of obtaining these credentials may be prohibitive for many small and medium-sized enterprises.⁵⁷ **Compensating or subsidizing smaller enterprises or collectives** to meet sustainability standards, or direct farm-to-buyer relationships can help address these barriers.



How cities can support sustainable procurement decisions. Image: [Cities4Forests, 2019](#).

Applying fair trade social standards to procured products can also make urban supply chains more equitable.



Source: [Fairtrade International](#).



Promoting Social Standards. Image: [Cities4Forests 2019](#), Adapted from: [Traid Craft](#).

[National Australia Bank](#)¹¹ incorporates social and sustainability standards in their procurement policies and practices. They purchase fair trade tea, coffee, hot chocolate, and sugar for their staff across Australia, making them the country's largest fair-trade workplace. Through their Reconciliation Action Plan, they are now exploring inclusion of indigenous businesses in their suppliers list to support employment of indigenous people.

Resources

[Fairtrade Standards](#) | Fairtrade International³⁴

[Exploring Fair Trade Timber: A review of issues in current practice, institutional structures and ways forward](#) | International Institute for Environment and Development (IIED), 2006⁵⁷

[Exploring gender and forest, tree and agroforestry value chains – Evidence and lessons from a systematic review](#) | Center for International Forestry Research (CIFOR), 2016⁴⁴

SUMMARY AND SELECTED RESOURCES

22. Summary

- Social equity issues will vary depending on the social, economic, and political contexts of cities, and approaches to address these issues must be adapted accordingly. These approaches can range from mitigating harm to vulnerable groups to actively empowering them through meaningful engagement in programs.
- There are many benefits that arise from adopting a social equity lens. Projects can achieve their goals more successfully if they implement inclusive processes. Equitable, sustainable, and efficient projects can offer many social, economic and sustainability benefits, but there may be financial and logistical considerations associated with addressing social equity issues in forest-related programs and policies.
- Some overarching social equity considerations applicable to engagements with all forest levels include:
 - Designing equitable forest-related policies and plans;
 - Using social information in decision making and for monitoring progress;
 - Conducting effective stakeholder identification and ensuring inclusive participation;
 - Providing equal employment opportunities.
- **At the inner forest level**, social equity considerations for programs and policies revolve around land-use decisions, affordability, accessibility, safety, and spatial distribution of urban green spaces.
- **At the nearby forest level**, community engagement can make ecotourism and recreational activities more inclusive.
- **At the faraway forest level**, forest management, protection, and use policies have social impacts on forest-reliant communities. Promotion of fair social standards in procurement of forest products can help cities engage in a mutually beneficial relationship with faraway forests.

This guide is a living document, so please reach out with any feedback (info@cities4forests.com). You may also reach out to our team by contacting Ayushi Trivedi (ayushi.trivedi@wri.org) to request further technical assistance on the social equity issues identified through this Learning Guide.

23. Selected Resources

Social Equity Concepts

- [Inclusion Matters – The foundation for shared prosperity](#) | World Bank¹⁰⁵
This report provides a comprehensive review of topics in social inclusion, and the trends and policies that shape the need for inclusion.
- [Concepts and Definitions](#) | UN Women⁸⁶
This webpage defines ‘gender’ and ‘gender equality’ and lists several fact sheets on the subject.

Policy Commitments for Social Equity

- [Investing in Equitable Urban Park Systems](#) | Urban Institute, 2019³⁰
This report highlights innovative case-studies around funding strategies and models that place equity and communities at the center of park investment decisions.
- [Parks for Inclusion Policy Guide | Initiatives](#) | National Recreation and Park Association⁶⁸
This web-page links to several NRPA initiatives that focus on creating more inclusive parks, ranging from resources on equitable access to the ‘Parks for Inclusion’ pledge.
- [Climate Action Planning Resource Centre](#) | C40, 2019¹⁵
A set of tools and resources on inclusive community engagement, inclusive planning and equitable impacts of climate action, including roadmaps, needs assessment modules, action analysis modules and indicator modules.
- [Equity Tool Kit I](#) | 11th Street Bridge Park, n.d.¹
Washington DC’s 11th Street Bridge Park project created an Equity Took Kit that documents their process of creating and implementing a community-driven plan for their park.

Use of Socioeconomic Information

- [Investing in Equitable Urban Park Systems: Case Studies + Recommendations](#) | City Parks Alliance, 2020¹⁹
This short document includes seven case studies of American cities that are leading the way in using data-driven approaches to ensure more equitable distribution of funding.
- [Developing a green infrastructure equity index to promote equity planning](#) | Heckert, M. & Rosan, C. D., 2016⁴⁵
In this academic paper, the authors develop a ‘Green Infrastructure Equity Index’ that uses social and economic data to identify and empower communities with high need.
- A variety of sources can be used to gather relevant social information. Examples include: [Know Your City \(SDI\)](#), [National Equity Atlas \(U.S.\)](#), [Safetipin](#), [LandMark](#), [Rights and Resources Initiative](#), [CUNY Institute for State and Local Governance \(ISLG\) Equality Indicators](#), [Demographic and Health Survey](#), [Living Standards Measurement Study](#), [Human Development Data](#), [FAO Gender and Land-rights Database](#), relevant national, regional or local statistics or research institutions, expert interviews, and results from gender and social analyses.

Stakeholder Identification

- **Mapping Social Landscapes Guide** | World Resources Institute, 2018¹⁰
This guidebook provides the methodology to conduct social network mapping in order understand stakeholders, specifically their priorities, values, and connections.
- **Gender Analysis** | European Institute for Gender Equality, n.d.²³
This short guidance tool lays out the basic steps to conduct a gender analysis, and presents the best known gender analysis frameworks and additional resources.
- **Gender Tool Box** | Swedish International Development Cooperation Agency, 2015⁸³
This brief defines and explains the key principles and elements behind conducting a gender analysis.
- **Gender Analysis Guidelines** | Department on the Status of Women, City and County of San Francisco, n.d.²⁵
These guidelines describe clear steps for conducting a gender analysis, providing suggested questions to ask for each step.
- **Social Impact Assessment** | International Association for Impact Assessment (IAIA), 2015⁹³
This report provides guidance for assessing and managing social impacts of projects related to infrastructure, agriculture and forestry.
- **Urban Climate Resilience Assessment in Vulnerable Neighborhoods (UCRA)** | World Resources Institute, 2018²⁵
This report describes the UCRA tool, that helps cities measure vulnerabilities, resilience capacities, access to information and services across neighborhoods. The report also demonstrates the application of the UCRA tool in poor communities of Rio de Janeiro (Brazil), Surat (India), and Semarang (Indonesia).
- **Comprehensive Food Security and Vulnerability Analysis Guidelines** | World Food Programme, 2009¹⁰⁷
This report provides information on the importance and methodology of evaluating communities' food security and vulnerability, and provides recommendations on interventions that can help address it.
- **Guidelines for a Gender Sensitive Participatory Approach** | International Centre for Integrated Mountain Development (ICIMOD), 2009⁴⁰
This short document provides basic guidelines on implementing a gender-sensitive participatory approach, including a description of relevant tools and resources, and a checklist of considerations.
- **Playbook: Inclusive Community Engagement** | C40 Cities, 2019¹³
This guidance document presents a suite of resources to be used for inclusive planning.

Meaningful Stakeholder Engagement

- **How to Engage Diverse Communities: A Toolkit** | Vibrant Cities Lab⁸⁸
This toolkit describes models for community change, assessment strategies and communications aimed at promoting public input and engagement.
- **Meaningful Stakeholder Consultation** | Inter-American Development Bank, 2017⁵⁴
This publication provides the principles and methodology on meaningful stakeholder consultation, consistent with IDB's environmental and social safeguard policies.
- **Guidelines on Free, Prior and Informed Consent** | The United Nations Programme on Reducing Emissions from Deforestation and Forest Degradation (UN REDD), 2013⁵⁵
This guidance document provides a framework for projects to obtain free, prior and informed consent as part of their meaningful stakeholder engagement processes.
- **Handbook for Preparing a Resettlement Action Plan** | International Financial Corporation (IFC), 2002³²
This World Bank guide provides guidance on involuntary resettlement to improve the livelihoods of those involved and minimize adverse effects.

- [Guidelines for Integrating Gender & Social Equity into Conservation Programming](#) | Conservation International, 2019²²
This document aims to guide conservation practitioners in recognizing and integrating gender and social equity dimensions into community-based conservation projects.
- [Inclusive Community Engagement: Executive Guide](#) | C40, 2019¹²
This guidance document presents a suite of resources to be used for inclusive community engagement.
- [Guidelines for a Gender Sensitive Participatory Approach](#) | International Centre for Integrated Mountain Development (ICIMOD), 2009⁴⁰
This short document provides basic guidelines on implementing a gender-sensitive participatory approach, including a description of relevant tools and resources, and a checklist of considerations.
- [Urban Community Resilience Assessment](#) | World Resources Institute, 2018⁷⁶
This report describes the UCRA tool, that helps cities measure vulnerabilities, resilience capacities, access to information and services across neighborhoods. The report also demonstrates the application of the UCRA tool in poor communities of Rio de Janeiro (Brazil), Surat (India), and Semarang (Indonesia).
- [A Seat at the Table](#) | World Resources Institute, 2010³⁶
This report highlights the barriers to access rights for poor communities, including access to information, participation and justice, and suggests relevant policy responses for the same.
- [Everyday Ethics in Community-based Participatory Research](#) | Banks et al., 2013³
This article explores a range of ethical issues related to community-based participatory research, complemented by cross-sectoral case-studies.
- [Gender Matters in Forest Landscape Restoration: a Framework for Design and Evaluation](#) | Center for International Forestry Research (CIFOR), 2017⁶
This report provides a framework and set of recommendations for enhancing gender equality and women's rights in and through forest landscape restoration initiatives.

Equal Employment Opportunities

- [Women in urban forestry and arboriculture: Experiences, barriers and strategies for leadership](#) | Bardekjian et al, 2019⁵
This academic article explains the barriers for and strategies to create more inclusive environments for women in their urban forestry and green jobs sectors.
- [Urban Forestry Toolkit \(Equity\)](#) | Vibrant Cities Lab⁹⁸
An introduction to incorporating equity concerns during urban forest planning by the Vibrant Cities Lab.
- [Promoting Gender Equitable Opportunities in Agricultural Value Chains: A Handbook](#) | The United States Agency for International Development (USAID), 2009⁹¹
This handbook introduces the importance of considering gender in agricultural value chains.
- [Gender and Racial Diversity in Environmental Organizations: Uneven Accomplishments and Cause for Concern](#) | Dorceta E. Taylor, 2015²⁷
This article explores the lack of representation of women and minorities in environmental organizations, particularly in leadership roles.
- [Time for Action: Changing the Gender Situation in Forestry](#) | Food and Agriculture Organization of the United Nations (UN FAO), 2006⁸⁵
In this document, experts survey existing disparities in employment and experience for women in forestry and identify the drivers necessary to catalyze change.

Equity in Spatial Distribution of Inner Forests

- [Urban Forestry Toolkit \(Equity\)](#) | Vibrant Cities Lab⁹⁸
An introduction to incorporating equity concerns during urban forest planning by the Vibrant Cities Lab.
- [Environmental Justice](#) | Community Commons²¹
Community Commons offers a compilation of resources and tools, including factsheets and educational videos, related to environmental justice.
- [Tree Equity Career Pathways Action Guide](#) | American Forests and Vibrant Cities Lab⁹⁴
This guide provides a step-by-step approach to developing urban forestry and urban greening career pathways that prioritize equity.
- [The dimensions of urban green equity: A framework for analysis](#) | Nesbitt et al. 2018⁶⁹
This academic article offers a framework for equity analysis related to urban greening.

Land Use in Inner Forests

- [Know Your City](#) | Slum/Shack Dwellers International (SDI)⁸¹
SDI supplies data related to informal settlements.
- [Mapping Social Landscapes Guide](#) | World Resources Institute, 2018¹⁰
This guidebook provides the methodology to conduct social network mapping in order understand stakeholders, specifically their priorities, values, and connections.
- [Where to Plant and Why](#) | Vibrant City Labs⁹⁷
How can we prioritize urban forest plantings where the need is greatest? This guide outlines the necessary steps.
- [Roadmap for Inclusive Planning](#) | C40, 2019⁷
The C40 guide to putting people at the center of climate action.
- [Handbook for Preparing a Resettlement Action Plan](#) | International Financial Corporation (IFC), 2002³²
This World Bank guide provides guidance on involuntary resettlement to improve the livelihoods of those involved and minimize adverse effects.

Affordability Considerations in Inner Forests

- [Roadmap for Inclusive Planning](#) | C40, 2019¹⁶
The C40 guide to putting people at the center of climate action.
- [Investing in Equitable Urban Park Systems](#) | Urban Institute, 2019³⁰
This report highlights innovative case-studies around funding strategies and models that place equity and communities at the center of park investment decisions.
- [Pathway to Parks & Affordable Housing Joint Development](#) | LA THRIVES and Los Angeles Regional Open Space and Affordable Housing (LAROSAH), n.d.¹¹⁰
This publication provides a framework for addressing urban greening and sustainable housing simultaneously.

Accessibility and Safety Considerations in Inner Forests

- [Best Management Practices for Crime Prevention Through Environmental Design in Natural Landscapes](#) | Green City Partnerships, 2019³⁹
Complete with abundant photos, this guide outlines best management practices to creating safe and inviting natural landscapes in urban parks.
- [Building Safe and Inclusive Cities for Women: A Practical Guide](#) | Jagori, 2011⁴⁹
This guide offers practical tools and resources to help build safer and inclusive cities for women.
- [Parks for Inclusion Resources](#) | National Recreation and Parks Association (NRPA)⁶⁸
These downloadable resources empower the user to design inclusive policies in parks and recreation agencies and programs and encourage their adoption by community and staff alike.
- [Creating Safe Park Environments to Enhance Community Wellness](#) | National Recreation and Parks Association (NRPA), n.d.⁶⁷
This issue brief provides an overview of the findings of a taskforce on park safety by the National Recreation and Parks Association, including several illustrative case studies.

Ecotourism and Recreation in Forests

- [How Ecotourism Affects Human Communities](#) | Zacarius and Loyola, 2017¹¹¹
This book chapter analyzes the role of ecotourism in empowering local people, discusses the economic benefits of ecotourism, and offers case studies of how ecotourism has been used.
- [Guidelines for Community-based Ecotourism Development](#) | World Wildlife Fund, 2001¹⁰⁹
These guidelines offer practical considerations for expanding community-based tourism, based on the experiences of World Wildlife Fund projects throughout the world.
- [Gender-Responsive Toolkit on Ecotourism Planning and Management](#) | Philippine Commission on Women, n.d.⁷¹
This toolkit recommends strategies for ensuring that ecotourism planning and management respond to gender issues and achieve gender equality.
- [A Toolkit for Monitoring and Managing Community-Based Tourism](#) | SNV and University of Hawaii, 2007⁸²
This toolkit provides step-by-step guidance for setting up a monitoring program for community-based tourism projects.
- [Linking Communities, Tourism & Conservation: A Tourism Assessment Process](#) | Conservation International, George Washington University, and The United States Agency for International Development (USAID), 2005⁴¹
This guidebook supports field practitioners interested in launching a tourism activity by first assessing a conservation location's potential for tourism, the impacts to biodiversity, and the social, cultural, and resource challenges.

Community Forest Management in Faraway Forests

- [Mapping Social Landscapes Guide](#) | World Resources Institute, 2018¹⁰
This guidebook provides the methodology to conduct social network mapping in order understand stakeholders, specifically their priorities, values, and connections.
- [Gender Analysis](#) | European Institute for Gender Equality, n.d.²³
This short guidance tool lays out the basic steps to conduct a gender analysis, and presents the best known gender analysis frameworks and additional resources.

- **Gender Tool Box** | Swedish International Development Cooperation Agency, 2015⁸³
This brief defines and explains the key principles and elements behind conducting a gender analysis.
- **Gender Analysis Guidelines** | Department on the Status of Women, City and County of San Francisco, n.d.²⁵
These guidelines describe clear steps for conducting a gender analysis, providing suggested questions to ask for each step.
- **Meaningful Stakeholder Consultation** | Inter-American Development Bank, 2017⁵⁴
This publication provides the principles and methodology on meaningful stakeholder consultation, consistent with IDB's environmental and social safeguard policies.
- **Guidelines on Free, Prior and Informed Consent** | The United Nations Programme on Reducing Emissions from Deforestation and Forest Degradation (UN REDD), 2013⁵⁵
This guidance document provides a framework for projects to obtain free, prior and informed consent as part of their meaningful stakeholder engagement processes.
- **Guidelines for a Gender Sensitive Participatory Approach** | International Centre for Integrated Mountain Development (ICIMOD), 2009⁴⁰
This short document provides basic guidelines on implementing a gender-sensitive participatory approach, including a description of relevant tools and resources, and a checklist of considerations.
- **LandMark** | World Resources Institute¹⁰⁸
This online, interactive platform provides maps and other critical information on lands that are collectively held and used by Indigenous Peoples and local communities.
- **Power and Potential: A Comparative Analysis of National Laws and Regulations Concerning Women's Rights to Community Forests** | Rights and Resources Initiative, 2017⁷⁷
This report analyzes 30 low- and middle-income countries to understand how their national laws and regulations address women's rights to community forests, with a special focus on indigenous and rural women.

Faraway Forest Protection and Use Policies

- A variety of sources can be used to gather relevant social information. Examples include: **LandMark**, **Rights and Resources Initiative**, **Demographic and Health Survey**, **Living Standards Measurement Study**, **Human Development Data**, **FAO Gender and Land-rights Database**, relevant national, regional or local statistics or research institutions, expert interviews, and results from gender and social analyses.

Promoting Social Standards in Procurement

- **Fairtrade Standards** | Fairtrade International³⁴
These standards outline recommendations and requirements for products to achieve the Fairtrade Standard label.
- **Exploring Fair Trade Timber: A review of issues in current practice, institutional structures and ways forward** | International Institute for Environment and Development (IIED), 2006⁵⁷
This report analyzes the progress and potential of fair trade timber, offering recommendations on how to ensure fair trade delivers social benefits to producer communities.
- **Exploring gender and forest, tree and agroforestry value chains – Evidence and lessons from a systematic review** | Center for International Forestry Research (CIFOR), 2016⁴⁴
This systematic review explains the gender differences and inequalities in the value chains of forest, tree, and agroforestry products, analyzes the factors that influence these differences, and recommends interventions that can foster greater gender equity.

24. Credits

Ayushi Trivedi, Author

Edith Juno, Author

John-Rob Pool, Author

Natalie Elwell, Author

Paige Langer, Author

Sabin Ray, Author

Terra Virsilas, Author

James Anderson, Editor

Beth Olberding, Reviewer

Delfina Grinspan, Reviewer

Elleni Ashebir, Reviewer

Maggie Gonzalez, Reviewer

Mathilde Bouye, Reviewer

Robin King, Reviewer

Ruchika Singh, Reviewer

Smita Rawoot, Reviewer

Todd Gartner, Reviewer

Additional thanks to Laura Malaguzzi Valeri (WRI), Jaya Dhindaw (WRI), Priya Narayanan (WRI), Sarah Wilson (Pilot Projects), Scott Fransisco (Pilot Projects), Dr. Michelle Larkins (Assistant Professor of “Gender & the Environment” and “Community Engaged Research” at Pacific University) and others for their additional review and insightful feedback.

Cities⁴Forests

PILOT PROJECTS

REVOLVE



WORLD
RESOURCES
INSTITUTE

25. References

1. 11th Street Bridge Park. N.d. "Equity Tool Kit". Building Bridges Across The River. Accessed at: <https://bbardc.org/equitytools/>
2. Abu Bakar, Nor Azlina. 2018. "Why Ecotourism Failed as an Alternative Livelihood in Marine Park: The importance of community's involvement in park management". *Environment-Behaviour Proceedings Journal*. 3.
3. Banks, S, et al. 2013. "Everyday ethics in community-based participatory research." *Contemporary Social Science*, 8:3, 263-277. Accessed at: <https://www.tandfonline.com/doi/pdf/10.1080/21582041.2013.769618>
4. Baran, Perver K., Payam Tabrizian, Yujia Zhai, Jordan W. Smith & Myron F. Floys. 2018. "An Exploratory Study of Perceived Safety in a Neighborhood Park Using Immersive Virtual Environments". *Urban Forestry & Urban Greening*, Volume 35.
5. Bardekjian, A., Nesbitt, L., Konijnendijk, C., & Lötter, B. 2019. "Women in urban forestry and arboriculture: Experiences, barriers and strategies for leadership." *Urban Forestry & Urban Greening*, 46, Urban Forestry & Urban Greening, December 2019, Vol.46. Accessed at: <https://www.sciencedirect.com/science/article/pii/S1618866719304297>
6. Basnett, Bimbika Sijapati, Marlène Elias, Markus Ihalainen and Ana Maria Paez Valencia. 2017. "Gender matters in Forest Landscape Restoration: A framework for design and evaluation". Center for International Forestry Research (CIFOR). Accessed at: <https://www.cifor.org/knowledge/publication/6685/>
7. Blackman, Allen, and Peter Veit. 2018. "Titled Amazon Indigenous Communities Cut Forest Carbon Emissions". *Ecological Economics*. Volume 153. Pages 56-67.
8. Bogle, Mary, Somala Diby and Mychal Cohen. 2019. "Equitable Development and Urban Park Space: Results and Insights from the First Two Years of Implementation of the Equitable Development Plan of DC's 11th Street Bridge Park Project". Urban Institute. Accessed at: https://www.urban.org/research/publication/equitable-development-and-urban-park-space-results-and-insights-first-two-years-implementation-equitable-development-plan-dcs-11th-street-bridge-park-project/view/full_report
9. Buckingham, Kathleen, Omanong Maneerattana and Sabin Ray. 2018. "Social Network Analysis Is Helping Us Regreen Rwanda. It Can Inform Your Environmental Work, Too." World Resources Institute. Accessed at: <https://www.wri.org/blog/2018/09/social-network-analysis-helping-us-regreen-rwanda-it-can-inform-your-environmental-work>
10. Buckingham, Kathleen, Sabin Ray, Ana Gabriela Morales, Ruchika Singh, Ornanong Maneerattana, Satrio Wicaksono, Hanny Chrysolite, Aaron Minnick, Lisa Johnston and Bernadette Arakwiye. 2018. "Mapping Social Landscapes: A Guide to Identifying the Networks, Priorities, and Values of Restoration Actors". World Resources Institute. Accessed at: <https://www.wri.org/publication/social-landscapes>
11. Burklett, Ingrid. 2010. "Social Procurement in Australia: A Compendium of Case Studies". Centre for Social Impact, University of New South Wales. Accessed at: <http://www.socialprocurementaustralasia.com/wp-content/uploads/2015/08/SocialProcurementinAustralia-CaseStudyCompendium.pdf>
12. C40 Cities Climate Leadership Group. 2019. "Inclusive Community Engagement: Executive Guide." C40 Knowledge Hub. Accessed at: https://www.c40knowledgehub.org/s/article/Inclusive-Community-Engagement-Executive-Guide?language=en_US
13. C40 Cities Climate Leadership Group. 2019. "Playbook: Inclusive Community Engagement." C40 Cities. Accessed at: https://cdn.locomotive.works/sites/5ab410c8a2f42204838f797e/content_entry5ab410fb74c4833febe6c81a/5d93560f8b673e007f889d22/files/Playbook_Inclusive_Community_Engagement.pdf?1570213078
14. C40 Cities Climate Leadership Group. 2019. "Equitable Impacts: Executive Guide". C40 Knowledge Hub. Accessed at: <https://resourcecentre.c40.org/resources/equitable-impacts>
15. C40 Cities Climate Leadership Group. 2019. "Inclusive Climate Action". Accessed at: <https://resourcecentre.c40.org/resources/inclusive-climate-action>
16. C40 Cities Climate Leadership Group. 2019. "Roadmap for Inclusive Planning – Policy Recommendations". C40 Knowledge Hub.
17. CDA Collaborative Learning Projects. 2004. "The Do No Harm Handbook (The Framework for Analyzing the Impact of Assistance on Conflict)". Accessed at: https://www.globalprotectioncluster.org/_assets/files/aors/protection_mainstreaming/CLP_Do_No_Harm_Handbook_2004_EN.pdf
18. Chuang, Wen-Ching; Boone, Christopher G.; Locke, Dexter H.; Grove, J. Morgan; Whitmer, Ali; Buckley, Geoffrey; Zhang, Sainan. 2017. "Tree canopy change and neighborhood stability: A comparative analysis of Washington, D.C. and Baltimore, MD". *Urban Forestry & Urban Greening*. 27: 363-372.
19. City Parks Alliance. 2020. "Investing in Equitable Urban Park Systems: Case Studies + Recommendations". City Parks Alliance. Accessed at: https://cityparksalliance.org/wp-content/uploads/2020/02/equitable-parks_case-studies-recs_2.19.20.pdf
20. Cohen-Shacham, E., Walters, G., Janzen, C. and Maginnis, S. (eds). 2016. "Nature-based Solutions to address global societal challenges". Gland, Switzerland: IUCN.
21. Community Commons. N.d. "Environmental Justice". Accessed at: <https://www.communitycommons.org/entities/706c04c6-4438-4f63-8710-5623c77a1ec7>
22. Conservation International. 2019. "Guidelines for Integrating Gender & Social Equity into Conservation Programming." Conservation International. Accessed at: https://www.conservation.org/docs/default-source/publication-pdfs/integrating-gender-and-social-equity-into-conservation-programming-2019.pdf?sfvrsn=6b8e5c33_2

23. Cozzarelli, C. 2010. "Tips for Conducting a Gender Analysis at the Activity or Project Level." European Institute for Gender Equality. Accessed at: https://pdf.usaid.gov/pdf_docs/Pnadt865.pdf
24. CSSP. 2019. "Key Equity Terms and Concepts: A Glossary for Shared Understanding." Washington, DC: Center for the Study of Social Policy.
25. Department on the Status of Women, City and County of San Francisco, n.d. "Gender Analysis Guidelines." sf.gov. Accessed at: <https://sfgov.org/dosw/gender-analysis-guidelines>
26. Ding, Helen, Peter Veit, Erin Gray, Katie Reyter, Altamirano Juan-Carlos, Allen Blackman, and Benjamin Hodgdon. 2016. "Climate Benefits, Tenure Costs. The Economic Case For Securing Indigenous Land Rights in the Amazon". Washington, DC: World Resources Institute.
27. Dorceta, E.T. 2015. "Gender and Racial Diversity in Environmental Organizations: Uneven Accomplishments and Cause for Concern." *Environmental Justice*. 8(5),165-180. Accessed at: <https://www.liebertpub.com/doi/abs/10.1089/env.2015.0018?journalCode=env>
28. Doshi, Sapana. 2019. "Greening Displacements, Displacing Green: Environmental Subjectivity, Slum Clearance, and the Embodied Political Ecologies of Dispossession in Mumbai". *International Journal of Urban and Regional Research*, Wiley Blackwell, vol. 43(1). Accessed at: <https://ideas.repec.org/a/bla/ijurrs/v43y2019i1p112-132.html>
29. Dyer, Michelle. 2018. "Transforming communicative spaces: the rhythm of gender in meetings in rural Solomon Islands". *Ecology and Society*. 23(1): 17. Accessed at: <https://www.ecologyandsociety.org/vol23/iss1/art17/#results11>
30. Eldridge, Matthew, Kimberly Burrowes and Patrick Spauster. 2019. "Investing in Equitable Urban Park Systems". Urban Institute. Accessed at: https://www.urban.org/research/publication/investing-equitable-urban-park-systems/view/full_report
31. Elias-Trostmann, Katerina and Loretta Burke. 2018. "Stronger Than the Storm: 3 Lessons for Building Climate Resilience in Poor Urban Communities". World Resources Institute. Accessed at: <https://www.wri.org/blog/2018/12/stronger-storm-3-lessons-building-climate-resilience-poor-urban-communities>
32. English, R., & Brusberg, F.E. 2002. "Handbook for Preparing a Resettlement Action Plan." International Finance Corporation (IFC) Environment and Social Development Department. Washington, DC: IFC. Accessed at: <https://www.ifc.org/wps/wcm/connect/ee19f150-f505-41db-891f-6ef5557195b6/ResettlementHandbook.PDF?MOD=AJPERES&CACHEID=ROOTWORKSPACE-ee19f150-f505-41db-891f-6ef5557195b6-jkD0CRL>
33. eThekweni Municipality. N.d. "Buffelsdraai Landfill Sites Community Reforestation Project". Accessed at: http://www.durban.gov.za/City_Services/development_planning_management/environmental_planning_climate_protection/Projects/Pages/Buffelsdraai-Community-Reforestation-Project.aspx
34. Fairtrade International. N.d. "Fairtrade Standards." Accessed at: <https://www.fairtrade.net/standard>
35. FAO. 2016. "Guidelines on urban and peri-urban forestry". Food and Agricultural Organization of the United Nations.
36. Foti, J. & de Silva, L. 2010. "A Seat at the Table Including the Poor in Decisions for Development and Environment." World Resources Institute. Accessed at: https://wriorg.s3.amazonaws.com/s3fs-public/pdf/a_seat_at_the_table.pdf
37. Gashu, Kassahun, Gebre-Egziabher, Tegegne & Wubneh, Mulatu. 2019. "Local communities' perceptions and use of urban green infrastructure in two Ethiopian cities: Bahir Dar and Hawassa". *Journal of Environmental Planning and Management*.
38. Green Belt Movement. n.d. "Integrating Climate Action and Communities Using the Landscape Approach. Lessons from the Green Belt Movement". Accessed at: http://www.greenbeltmovement.org/sites/greenbeltmovement.org/files/GBM%20Report%202014_0.pdf
39. Green City Partnerships. 2019. "Best Management Practices for Crime Prevention Through Environmental Design in Natural Landscapes ". The Green Cities Partnerships. Accessed at: https://www.greenSeattle.org/wp-content/uploads/2019/02/CPTED-in-Natural-Areas-Final-Draft-Feb-2018_web.pdf
40. Gurning, Min Bdr., Leduc, Brigitte. 2009. "Guidelines for a Gender Sensitive Participatory Approach." International Centre for Integrated Mountain Development (ICIMOD). Accessed at: <http://www.icimod.org/resources/443>
41. Gutierrez, Eileen, Kristin Lamoureux, Seleni Matus and Kaddu Sebunya. 2005. "Linking Communities, Tourism & Conservation: A Tourism Assessment Process". Conservation International, The George Washington University and USAID. Accessed at: https://www2.gwu.edu/~iits/Sustainable_Tourism_Online_Learning/Gutierrez/Tourism_Assessment_Process_Manual.pdf
42. Habitat International Coalition. n.d.
43. Hart, Maria, Jillian Du, and Caroline Coccoli. 2020. "How to prevent city climate action from becoming 'green gentrification'". Greenbiz.
44. Haverhals, M., Ingram, V., Elias, M., Basnett, B.S. & Petersen, S. 2016. "Exploring gender and forest, tree and agroforestry value chains: Evidence and lessons from a systematic review." Center for International Forestry Research (CIFOR). Accessed at: http://www.cifor.org/publications/pdf_files/infobrief/6279-infobrief.pdf
45. Heckert, M. & Rosan, C. D. 2016. "Developing a green infrastructure equity index to promote equity planning". *Urban Forestry & Urban Greening*. Volume 19. Accessed at: <https://www.sciencedirect.com/science/article/abs/pii/S1618866715001892>
46. Herz, Steven, Antonida Vina, and Johnathan Sohn. 2007. "Development Without Conflict. The business case for community consent". Washington, DC: World Resources Institute.
47. IHC Global. n.d.
48. International Financial Corporation (IFC). 2002. "Handbook for Preparing a Resettlement Action Plan". IFC. Accessed at: <https://www.ifc.org/wps/wcm/connect/ee19f150-f505-41db-891f-6ef5557195b6/ResettlementHandbook.PDF?MOD=AJPERES&CACHEID=ROOTWORKSPACE-ee19f150-f505-41db-891f-6ef5557195b6-jkD0CRL>
49. Jagori. 2011. "Building Safe and Inclusive Cities for Women: A Practical Guide". Jagori, UN Women, UN Habitat, Government of NCT of Delhi. Accessed at: <http://www.stopstreetharassment.org/wp-content/uploads/2011/04/5-13-add-building-safe-inclusive-cities-for-women.pdf>

50. Jansson, Marit, Hanna Fors, Therese Lindgren, and Bjorn Wistrom. 2013. "Perceived personal safety in relation to urban woodland vegetation – A review." *Urban Forestry & Urban Greening* 127-133.
51. Johansson, Maria, Kristina Johansson, Elias Andersson. 2018. "#Metoo in the Swedish forest sector: testimonies from harassed women on sexualised forms of male control". *Scandinavian Journal of Forest Research*, Volume 33, Pages 419-425.
52. Kapos, Steven and Evangelia Bourmpoula. 2013. "Employment and economic class in the developing world". ILO. Accessed at: https://www.ilo.org/wcmsp5/groups/public/---dgreports/---inst/documents/publication/wcms_216451.pdf?fbclid=IwAR2P5Q_JOGkE5vAuCLzs5vt2s1bWri5Gqr1-o_2jg9AettA4PLpBgxQOh3U
53. Kenya Forest Service. N.d. "Participatory Forest Management Plans Implementation". Kenya Forest Service. Accessed at: http://www.kenyaforests.org/index.php?option=com_content&view=article&id=487&Itemid=680
54. Kvam, R. 2017. "Meaningful Stakeholder Consultation." Inter-American Development Bank. Accessed at: <https://publications.iadb.org/en/meaningful-stakeholder-consultation>
55. Laughlin, J. 2013. "Guidelines on Free, Prior and Informed Consent." UN-REDD PROGRAMME Accessed at: <https://www.unclearn.org/sites/default/files/inventory/un-redd05.pdf>
56. Leisher, C., Temsah, G., Booker, F. et al. 2016. "Does the gender composition of forest and fishery management groups affect resource governance and conservation outcomes? A systematic map". *Environ Evid* 5, 6.
57. Macqueen, D.J., Dufey, A. and Patel, B. 2006. "Exploring fair trade timber: A review of issues in current practice, institutional structures and ways forward." IIED Small and Medium Forestry Enterprise Series No. 19. IIED, Edinburgh, UK. Accessed at: https://www.researchgate.net/publication/237299526_Exploring_fair_trade_timber_A_review_of_issues_in_current_practice_institutional_structures_and_ways_forward
58. Maruthaveeran, Sreetheran & Konijnendijk van den Bosch, Cecil. 2014. "A socio-ecological exploration of fear of crime in urban green spaces – A systematic review". *Urban Forestry & Urban Greening*.
59. Mekonen, Workwoha, Ziade Hailu, John Leckie, and Gladys Savolainen. 2019. "Protecting Land Tenure Security of Women in Ethiopia: Evidence from the Land Investment for Transformation Program". *Resource Equity*. Accessed at: <https://landwise.resourceequity.org/records/3124-protecting-land-tenure-security-of-women-in-ethiopia-evidence-from-the-land-inve>
60. Ministry of Tribal Affairs, Government of India. N.d. "Forest Right Act". Government of India. Accessed at: <https://tribal.nic.in/fra.aspx>
61. Mock, Brentin. 2019. "Why Detroit Residents Pushed Back Against Tree-Planting". *Citylab*. Accessed at: <https://www.citylab.com/environment/2019/01/detroit-tree-planting-programs-white-environmentalism-research/579937/>
62. Mummert, Jared. 2018. "Understanding Equity in Parks and Recreation". *OpenSpace Blog*. National Recreation and Parks Association.
63. Munang, Richard, Jessica Andrews, Keith Alverson, Desta Mebratu. 2014. "Harnessing Ecosystem-based Adaptation to Address the Social Dimensions of Climate Change: *Environment Magazine*.
64. Mwangi, E., Ruth Meinzen-Dick and Yan Sun. 2011. "Gender and sustainable forest management in East Africa and Latin America". *Ecology and Society* 16(1): 17. Accessed at: https://www.cifor.org/publications/pdf_files/articles/AMwangi1103.pdf
65. Naidoo, R., Gerkey, D., Hole, D., Pfaff, A., Ellis, A. M., Golden, C. D., Herrera, D., Johnson, K., Mulligan, M., Ricketts, T. H., & Fisher, B. 2019. "Evaluating the impacts of protected areas on human well-being across the developing world". *Science advances*, 5(4), eaav3006. Accessed at: <https://pubmed.ncbi.nlm.nih.gov/30949578/>
66. National Recreation and Parks Association (NRPA). 2018. "Park and Recreation Inclusion Report". National Recreation and Park Association. Accessed at: <https://www.nrpa.org/contentassets/e386270247644310b06960be9e9986a9/park-recreation-inclusion-report.pdf>
67. National Recreation and Parks Association (NRPA). N.d. "Creating Safe Park Environments to Enhance Community Wellness". National Recreation and Parks Association (NRPA). Accessed at: <https://www.nrpa.org/contentassets/f768428a39aa4035ae55b2aaff372617/park-safety.pdf>
68. National Recreation and Parks Association (NRPA). N.d. "Parks for Inclusion Policy Guide". NRPA. Accessed at: <https://www.nrpa.org/our-work/partnerships/initiatives/parks-for-inclusion/policy-guide/>
69. Nesbitt, Lorian, Michael J. Meitner, Stephen R.J. Sheppard and Cynthia Girling. 2018. "The dimensions of urban green equity: A framework for analysis". *Urban Forestry & Urban Greening*. Volume 34. Accessed at: <https://www.sciencedirect.com/science/article/abs/pii/S1618866718301638>
70. Perception Institute. 2019. "Implicit Bias". Retrieved at: <https://perception.org/research/implicit-bias/>
71. Philippine Commission on Women (PCW). 2013. "Gender-responsive Toolkit on Ecotourism Planning And Management". Philippine Commission on Women (PCW) and the Department of Environment and Natural Resources. Accessed at: <https://www.pcw.gov.ph/publication/gender-responsive-toolkit-ecotourism-planning-and-management>
72. Plan International. 2018. "Unsafe in the City. The everyday experiences of girls and young women". Plan International. Accessed at: <https://www.plan.org.au/-/media/plan/images/unsafe-city/reports/unsafe-in-the-city-full.pdf?la=en&hash=53997CB2224BB61FF2AC0FC9BE8DED97D634364C>
73. Portland Parks & Recreation. 2003. "Portland Urban Forestry Management Plan". Portland Parks & Recreation and the Urban Forestry Management Plan Technical Advisory Committee. Accessed at: <https://www.portlandoregon.gov/shared/cfm/image.cfm?id=40328>
74. Poudyal, M., Jones, J., Rakotonarivo, O. S., Hockley, N., Gibbons, J. M., Mandimbiniaina, R., Rasoamanana, A., Andrianantenaina, N. S., & Ramamonjisoa, B. S. 2018. "Who bears the cost of forest conservation?". *PeerJ*, 6, e5106. Accessed at: <https://www.ncbi.nlm.nih.gov/pmc/articles/PMC6035863/>
75. Pullin AS, Bangpan M, Dalrymple S, Dickson K, Haddaway NR, Healey JR, Hauari H, Hockley N, Jones JPG, Knight T, Vigurs C, Oliver S. 2013. "Human well-being impacts of terrestrial protected areas". *Environmental Evidence*. 2013;2(1):1–19.

76. Rangwala, Lubaina, Katerina Elias-Trostmann, Lauretta Burke, Retno Wihanesta, and Mandakini Chandra. 2018. "Prepared Communities: Implementing the Urban Community Resilience Assessment in Vulnerable Neighborhoods of Three Cities". World Resources Institute and Cities Alliance. Accessed at: <https://wriorg.s3.amazonaws.com/s3fs-public/prepared-communities-implementing-urban-community-resilience-assessment.pdf>
77. Rights and Resources Initiative (RRI). 2017. "Power and Potential: A Comparative Analysis of National Laws and Regulations Concerning Women's Rights to Community Forests." Washington, DC: RRI. Accessed at: <https://rightsandresources.org/en/publication/power-and-potential/#.Xukvk0VKjX>
78. Rights and Resources Initiative (RRI). 2018. "A Global Baseline of Carbon Storage in Collective Lands – Indigenous and Local Community Contributions to Climate Change Mitigation". Washington, DC: RRI
79. Rist, Lucy, R. Uma Shaanker, E. J. Milner-Gulland and Jaboury Ghazoul. 2010. "The Use of Traditional Ecological Knowledge in Forest Management: an Example from India". *Ecology and Society* 15(1): 3.
80. San Francisco Public Utilities Commission. 2019. "FY 2018-19 Green Bond Report. Water Enterprise". Accessed at: <https://sfwater.org/Modules/ShowDocument.aspx?documentid=14613>
81. Slum/Shack Dwellers International (SDI). N.d. "Know Your City". Accessed at: <http://knowyourcity.info/>
82. SNV and University of Hawaii. 2007. "A Toolkit for Monitoring and Managing Community-Based Tourism". SNV and University of Hawaii. Accessed at: <http://www.bibalex.org/Search4Dev/files/283814/115937.pdf>
83. Swedish International Development Cooperation Agency. 2015. "Gender Analysis – Principles & Elements." Gender Tool Box. Accessed at: <https://www.sida.se/contentassets/a3f08692e731475db106fdf84f2fb9bd/gender-tool-analysis.pdf>
84. UN Department of Economic and Social Affairs. 2016. "Leaving no one behind: the imperative of inclusive development. Resport on the World Social Situation 2016". New York. UN.
85. UN FAO. 2006. "Time for Action: Changing the Gender Situation in Forestry." FAO. Rome: FAO. Accessed at: https://www.unece.org/fileadmin/DAM/timber/docs/publications-other/Time%20for%20Action_Gender%20and%20Forestry.pdf
86. UN Women. N.d. "Concepts and Definitions". UN. Accessed at: <https://www.un.org/womenwatch/osagi/conceptsanddefinitions.htm>
87. United Nations Framework Convention on Climate Change. 2016. "Guidelines or Other Tools for Integrating Gender Considerations in Climate Change Related Activities under the Convention". UNFCCC.
88. University of Kansas Vibrant Cities Lab. n.d. "How to Engage Diverse Communities: A Toolkit." Vibrant Cities Lab. Accessed at: <https://ctb.ku.edu/en/table-of-contents>
89. UN-REDD Programme. 2011. "Guidelines on Free, Prior and Informed Consent". FAO, UNDP, UNEP.
90. UN-REDD Programme. 2013. "The Business Case For Mainstreaming Gender in REDD+". FAO, UNDP, UNEP.
91. USAID. 2009. "Promoting Gender Equitable Opportunities in Agricultural Value Chains: A Handbook." USAID. Washington, DC: USAID. Accessed at: https://pdf.usaid.gov/pdf_docs/pnaeb644.pdf
92. USAID. 2017. "Gender Integration Continuum". Accessed at: https://www.igwg.org/wp-content/uploads/2017/05/FG_GendrIntegrContinuum.pdf
93. Vanclay, Frank, Ana Maria Esteves, Ilse Aucamp and Daniel M. Franks. 2015. "Social Impact Assessment: Guidance for assessing and managing the social impacts of projects". International Association for Impact Assessment (IAIA). Accessed at: https://www.commddev.org/pdf/publications/P_IAIA_2015_Social_Impact_Assessment_guidance_document.pdf
94. Vibrant Cities Lab. N.d. "Career Pathways Action Guide". Accessed at: <https://www.vibrantcitieslab.com/guides/career-pathways-action-guide/>
95. Vibrant Cities Lab. N.d. "Maryland Workforce Development Program Launches Careers in Tree Care". Accessed at: <https://www.vibrantcitieslab.com/case-studies/maryland-workforce-development-program-launches-careers-in-tree-care/>
96. Vibrant Cities Lab. N.d. "Philadelphia: Roots to Re-Entry". Accessed at: <https://www.vibrantcitieslab.com/case-studies/roots-to-re-entry/>
97. Vibrant Cities Lab. N.d. "Toolkit Step 3: Where to Plant and Why". Retrieved from: <https://www.vibrantcitieslab.com/toolkit/where-to-plant-and-why/>
98. Vibrant Cities Lab. N.d. "Toolkit Step 4: Equity". Accessed at: <https://www.vibrantcitieslab.com/toolkit/equity/>
99. Vibrant Cities Lab. N.d. "Uneven Distribution". Accessed at: https://www.vibrantcitieslab.com/research/equity-unbalanced-distribution/?fbclid=IwAR19ADIYtcU2DDU0wMlocRScDiBSGr7W95_7aBbES_xKnvYL7Hs2-RXVF4
100. vom Hove, T., McCawley, P. and Baskoro, H. 2014. "Mayor of the Month for February 2014: Tri Rismaharini". Retrieved from: <http://www.citymayors.com/mayors/surabaya-mayor-tri-rismaharini.html>
101. Whitney, Sheryl Verlaire. 2010. "Seeking Sustainable and Inclusive Communities: A King County Case Study". What Works Collaborative. Accessed at: <https://www.urban.org/sites/default/files/publication/28071/1001380-Seeking-Sustainable-and-Inclusive-Communities.PDF>
102. WHO. n.d. "Equity". World Health Organization.
103. Wilson, Emma. 2009. "Company-Led Approaches to Conflict Resolution in the Forest Sector". *The Forest Dialogue*.
104. Wolch, Jennifer R., Jason Byrne, Joshua P. Newel. 2014. "Urban green space, public health, and environmental justice: The challenge of making cities 'just green enough'". *Landscape and Urban Planning*, Volume 125, Pages 234-244.
105. World Bank. 2013. "Inclusion Matters: The Foundation for Shared Prosperity". Washington, DC: World Bank. Accessed at: <https://openknowledge.worldbank.org/bitstream/handle/10986/16195/9781464800108.pdf?sequence=1&isAllowed=y>
106. World Bank. 2019. "Want to Protect Forests? Engage More Women, Says Nepal's Joint-Secretary for Forests". The World Bank. Accessed at: <https://www.worldbank.org/en/news/feature/2019/03/07/want-to-protect-forests-engage-more-women-says-nepals-joint-secretary-for-forests>
107. World Food Programme (WFP). 2009. "Comprehensive Food Security & Vulnerability Analysis Guidelines." Rome: WFP. Accessed at: https://documents.wfp.org/stellent/groups/public/documents/manual_guide_proced/wfp203208.pdf

108. World Resources Institute. N.d. "LandMark". Accessed at: <http://www.landmarkmap.org/>
109. WWF International. 2001. "Guidelines for community-based ecotourism development". WWF International. Accessed at: https://www.widecast.org/Resources/Docs/WWF_2001_Community_Based_Ecotourism_Develop.pdf
110. Yee, Thomas, Sissy Trinh and Natalie Zappella. N.d. "Pathway to Parks & Affordable Housing Joint Development". LA THRIVES and Los Angeles Regional Open Space and Affordable Housing (LAROSAH). Accessed at: https://d3n8a8pro7vhm.cloudfront.net/lathrives/pages/172/attachments/original/1541797472/Pathway_to_Parks_and_Affordable_Housing.pdf?1541797472
111. Zacarias, Daniel & Loyola, Rafael. 2017. "How Ecotourism Affects Human Communities. Ecotourism's promise and peril: a biological evaluation", Chapter 9. Springer.
112. Zhu, Zhanqiang, Jie Ren and Xuan Liu. 2019. "Green infrastructure provision for environmental justice: Application of the equity index in Guangzhou, China". *Urban Forestry & Urban Greening*. Volume 46. Accessed at: <http://www.sciencedirect.com/science/article/pii/S1618866719301207>



CITIES4FORESTS

IS AN INITIATIVE BY PILOT PROJECTS, REVOLVE AND THE WORLD RESOURCES INSTITUTE (WRI)
INFO@CITIES4FORESTS.COM | WWW.CITIES4FORESTS.COM | #CITIES4FORESTS

Group photo - WRUA and CFA members. Photo: Patrick Shepherd CIFOR/Flickr