



WORLD
RESOURCES
INSTITUTE | ROSS
CENTER



WRI ROSS CENTER PLANNING RETREAT: DAY 2

April 24, 2024

Monday 4/22	Day 1: Tuesday 4/23	Day 2: Wednesday 4/24 <i>(office)</i>	Day 3: Thursday 4/25	Day 4: Friday 4/26		
Arrival in The Hague	Breakfast					
	Welcome Session (45 min)	Roundtable II: Scaling our Work (75 min)		RPT Workshop (90 min)	Side Session IV (90 min)	Managing Organizational Growth & Financial Health (45 min)
	Retreat Overview & Objectives (30 min)					Bringing Strategic Focus to External Engagements (60 min)
	Focusing on Country Transitions (75 min)	Livable Neighborhoods Pillar Workshop (90 min)	Side Session II (90 min)	Integrated Climate Action Workshop (75 min)		Retreat Summary (60 min)
	Lunch					
	Roundtable 1: Future of the Cities Transition (60 min)	Partnering with WRI Europe (30 minutes)		Elevating Research, Data, & Learning (60 min)		Begin Departures
	Climate Resilience Pillar Workshop (90 min)	Side Session I (90 min)	Connective Mobility Pillar Workshop (90 min)	Side Session III (90 min)	Fundraising Strategy (45 min)	
	Flex Meeting Time (45 min)	Deep Dive Workshop (90 min)		Site Visit + Travel to Rogier's House for Dinner (3 hours)		
	Opening Dinner: Milu	Beachside Dinner: Xiringuito	Optional Dinner		Closing Dinner at Rogier's	

Full Group Discussions

Workshops

Awareness -Raising



RETREAT OBJECTIVES

- 1) Take quality time to pause, reflect, and learn from each other.
- 2) Build shared understanding around WRI's New Strategy and discuss implications for teams across the WRI network.
- 3) Advance workplans fostering collaboration across Strategic Initiatives, Country-level priorities, and the three pillars of the Cities Transition.

WE NEED YOUR PLANS TO THINK ABOUT...

ON-THE-GROUND IMPACT

Cross-sector as well as sector-based interventions.

SCALING

Via Country Transitions and collaboration with Local Coalitions, Global Initiatives and WRI's Enabling Systems.

STRATEGIC FUNDRAISING & PARTNERSHIPS

Position projects as the seed for larger cross-cutting funding with key partners.

KNOWLEDGE & DATA

Few and strategic knowledge products, and bi-products.

REPLICABILITY

Mature, document and disseminate WRI's unique approach.



WORLD
RESOURCES
INSTITUTE

LOW-CARBON, INCLUSIVE, RESILIENT CITIES

SCALING INTEGRATED SOLUTIONS AND
PARTNERSHIPS FOR IMPACT

WE KNOW CITIES ARE DRIVERS OF CHANGE

The **opportunity** is to leverage the great transition in cities to create a **better world for all.**

RESILIENT

INCLUSIVE

LOW-CARBON

WHAT DOES SUCCESS MEAN FOR WRI INDIA ROSS CENTER?



WRI India Ross Center can look at *“Influence”* as a currency of success

What do we want to “Influence” as an Organization?



**Influence Policy
level decision
making for
Urban
Development**



**Influence
principles in the
ecosystem**



**Influence Capital
investments in the
Ecosystem**

WHAT ARE THE DIFFERENT PATHWAYS TO ACHIEVE IMPACT AT SCALE?

Are there other important pathways to scale impact?



Linear Model of Scale

- **Geography:** Enter newer cities and replicate interventions across multiple geographies
- **Focus Areas:** Intervene in more areas / themes based on ecosystem trends
- **Team:** Grow size of team by onboarding quality talent
- **Budget:** Increase funding and organisational budget to expand reach of interventions



Scale through Partnerships

- **Partnerships:** Orchestrate a network of peer organizations in the ecosystem and expand on-ground reach
- **Coalitions:** Building coalitions/ network of key ecosystem players (peers, Donors, Govt, Corporates, Citizens, Academic Institutions, Industry Bodies) to facilitate exchange of ideas, learnings and action on “why and how of urban development”



Scale through Agenda Setting

- **National level:** Working at a national level with central governments
- **State level:** Working at a state level with state governments
- **City level:** Working at a local level with municipal bodies



Scale through Capability Building

- **Ecosystem :** Running fellowships/ sector specific platforms to build relevant capabilities for the ecosystem
- **Government:** Capability building of government stakeholders to implement projects independently or sustain projects after an organization’s exit

WHAT ARE THE CAPABILITIES NEEDED TO ACHIEVE IMPACT AT SCALE?

Identify new capabilities required to execute on the aspirations and the pathways

Sectoral Expertise	Analytics
Functional Expertise	MEL; Research and leadership training; Design Capabilities ; Platform approach for solution in ; Systems thinking; DEI specialists
Geographic Expertise	City level knowledge of local cities and topography
Stakeholder Expertise	Critical to build capabilities for donors, faith-based organizations and non-profits
Organizational Expertise	Data; Fundraising; Communication; Learning & Development



1. What are the **key capabilities** that we need?
2. What do we need to **build / acquire**?
3. What are the **key partnerships** that we need to forge?

3 SCALE PATHWAYS OF CITIES STRATEGY

LOW-CARBON, RESILIENT,
INCLUSIVE INDIAN CITIES

Connective
Mobility

Livable
Neighborhoods

Climate
Resilience

Informing National Policy & Programs

1

2

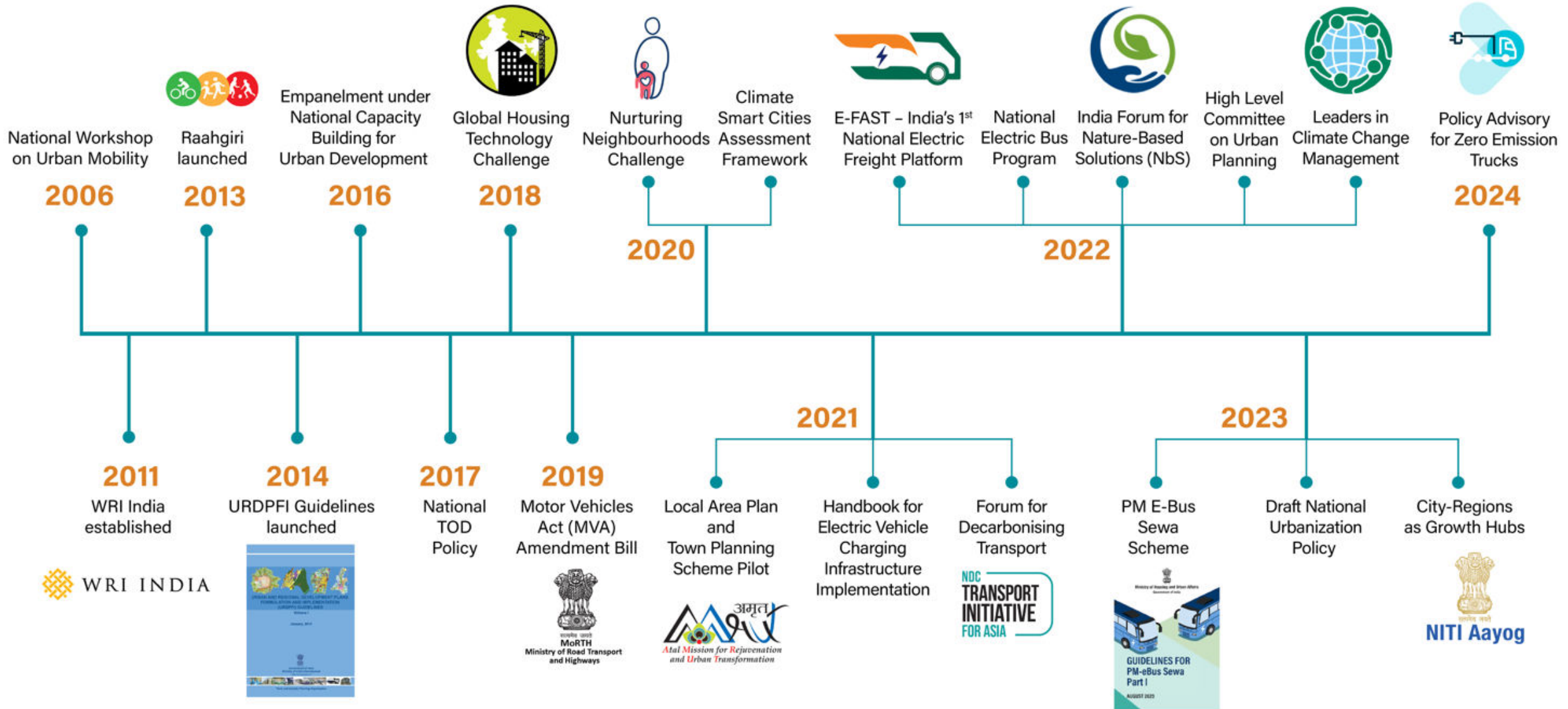
3

Leveraging Research, Data,
Tools for Policy & Practice

Catalysing Finance for
Systems Change

Scaling Localized Action through Deep Engagement

NATIONAL ENGAGEMENT

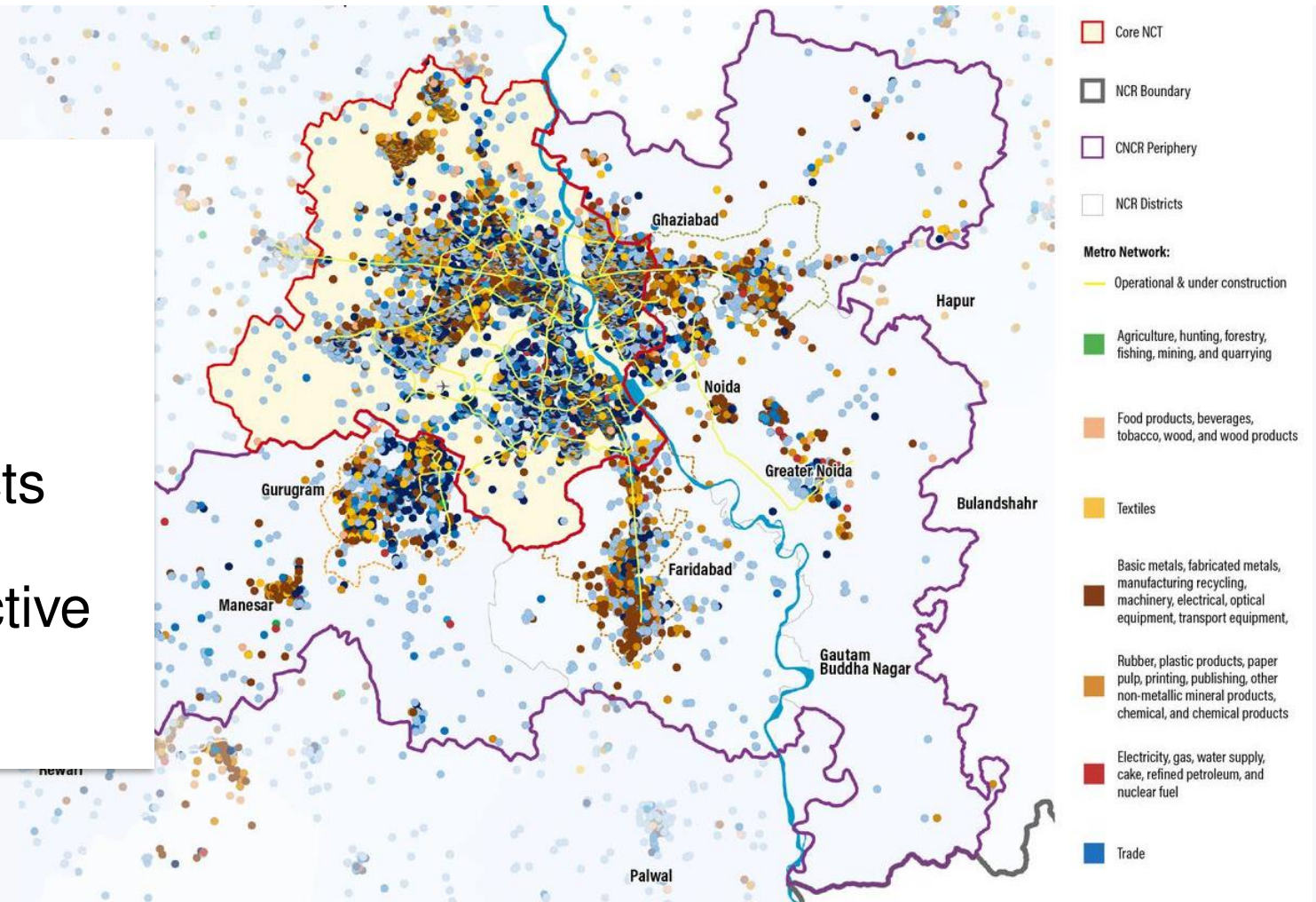


SCALE PATHWAY 1: LEVERAGING RESEARCH, DATA AND TOOLS

Visualize spatial aspects of problems to inform decisions

Translate into evidence-based plans, policies, budgets, projects

Create toolkits to enable collective action



SHAPING A RESILIENT KOCHI



DATA

Participatory
geospatial mapping

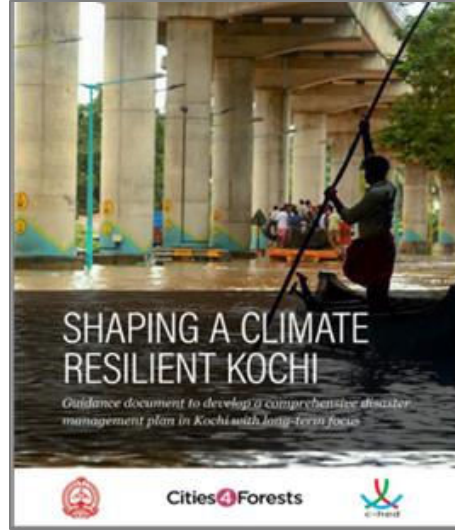
Neighbourhood level
assessments (**UCRA**)



PILOTS

Science-based,
**community-led
greening**

Integration with urban
employment scheme



POLICY

Shifting the **Kochi City
Disaster Management
Plan** towards
resilience and
preparedness



PROJECTS

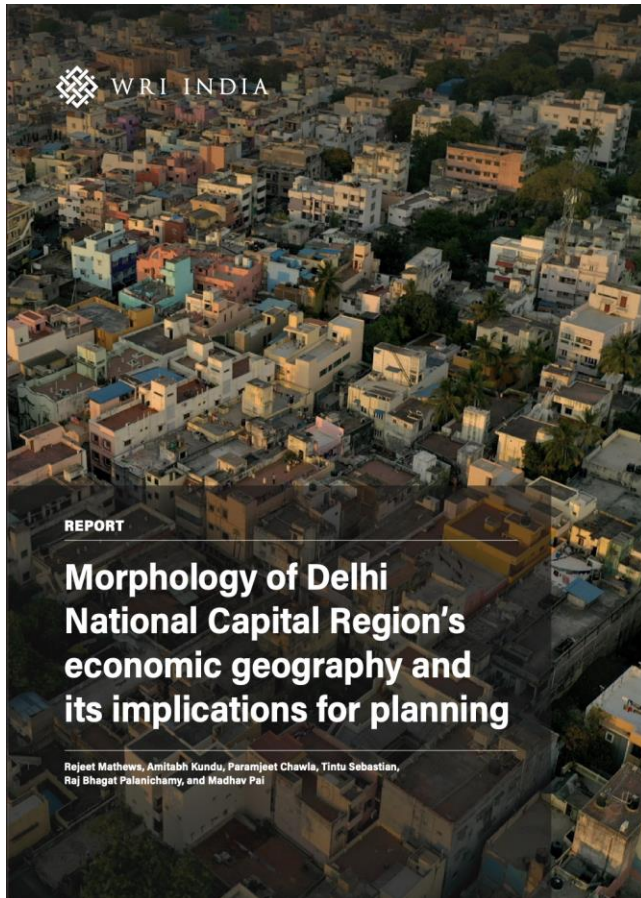
**Institutionalizing
NBS** in the city
planning process



CAPACITY BUILDING

**Leaders across 93
municipalities** in
Kerala State to
advance localized
climate action

INFORMING POLICY WITH OUR ECONOMIC GEOGRAPHY RESEARCH



Draft National Urban Policy

Economic Advisory Council to the Prime Minister

Growth Hubs Programme

National Institution for Transforming India

High Level Committee – Centers of Excellence

Ministry of Housing and Urban Affairs

Subnational Capacity Building

Haryana, Telangana, Kerala, Gujarat, Delhi

SCALE PATHWAY 2: SCALING LOCALIZED ACTION WITH DEEP ENGAGEMENT

Build ground-up, multi-sector knowledge through sustained engagement

Foster trusted partnerships with diverse stakeholders

Develop strategic plans



BENGALURU DEEP DIVE

- INTEGRATED TRANSPORT
- URBAN DEVELOPMENT
- URBAN EFFICIENCY
- CROSS SECTORAL



Bus
Big Bus Network

2010



Indiranagar Station
Accessibility Plan &
Development Control
Regulations

2011



Bus
ORR BRT Proposal

2012



HSR Neighbourhood
Improvement Plan

2013



Karnataka Electricity
Governance Network

2010



Townships
Sustainable Mobility
Design Practices

2011



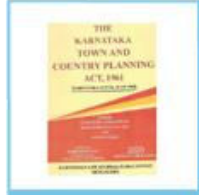
GPMDG India launch;
CollabSolar Project

2013



Electricity Sector -
Integrated Resources
Planning

2014



Karnataka Town and
Country Planning Act
Revision

2014



Neighborhood
Improvement
Partnership Challenge

2015



BBMP Restructuring
Phase 1

2015



Strategic Projects
Whitefield, Ring
Roads, BIAPPA

2015



Bus
Financial Sustainability
(fleet augmentation,
fare restructuring, tax
exemptions)

2015



Residential
VidyutRakshaka Phase 1;
Rooftop Solar

2015



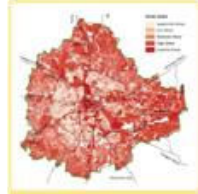
Unlock Bengaluru -
Inaugural Conference

2016



BIAL Solar

2016



City Water Assessment
Framework + Pilots

2016



Unlock Bengaluru -
Inaugural Conference

2016



Developers
Dialogue

2017



BBMP Restructuring
Phase 2

2017



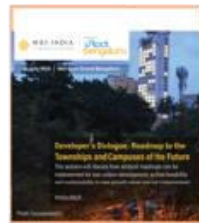
Developers
Dialogue

2017



VidyutRakshaka a-
Scale-up (VR Lite, VR
for Aggregators)

2017



Developers
Dialogue

2017



TheCityFix
Labs
Sustainable Habitats

2018



**Better
Bus 2018**
AN INNOVATION CHALLENGE
PILOT

2018



Bengaluru Revised
Master Plan 2031

2018



TheCityFix
Labs
Sustainable Habitats

2018



RE Procurement -
Green Tariffs

2019



Bus and Metro
Complementary Services
and Mode Integration

2019



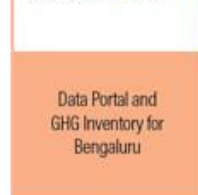
Integrated
Regulatory Strategy
for TOD in Bengaluru

2019



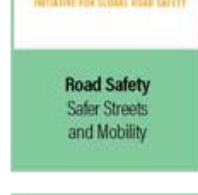
RE Procurement -
Green Tariffs

2019



Data Portal and
GHG Inventory for
Bengaluru

2020



Road Safety
Safer Streets
and Mobility

2020



Potential Benefits of
Bengaluru Metro and
TOD - Evaluation

2020



DATA for
PORTAL CITIES

2020



**INDIA
CYCLES 4
CHANGE
CHALLENGE**

2020



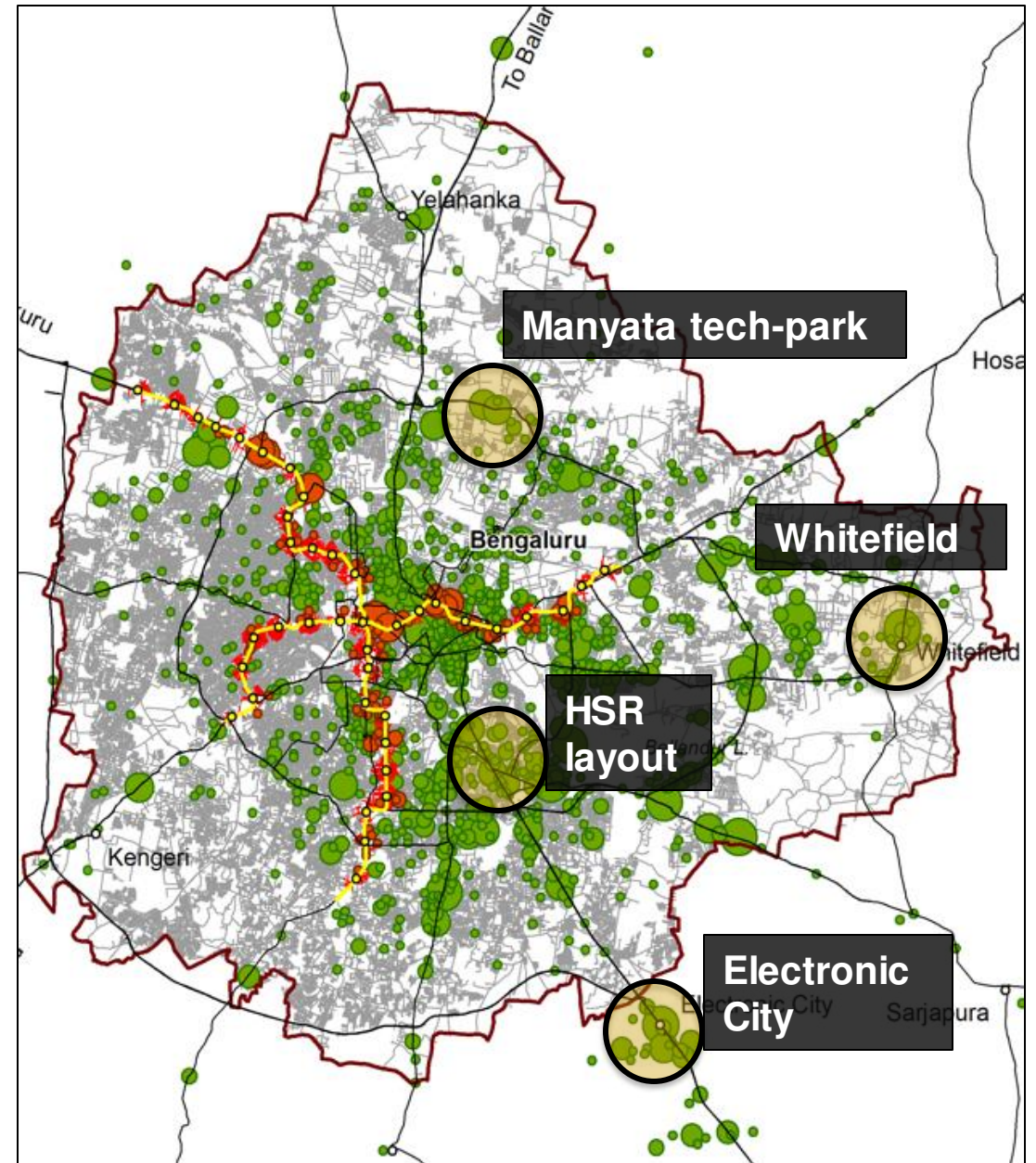
Potential Benefits of
Bengaluru Metro and
TOD - Evaluation

2020

NEED FOR INTEGRATED PLANNING: JOBS NEAR MASS TRANSIT

USD 7 billion infrastructure investment: an economic growth opportunity

Of the total jobs within the city, only **6%** are within 500m of the operational Ph 1 metro stations



STRATEGIC PLAN: BENGALURU CLIMATE ACTION & RESILIENCE PLAN



NAMMA RASTE: A COLLABORATIVE PLATFORM TO TRANSFORM 1,000 KM OF BENGALURU STREETS



SCALE PATHWAY 3: CATALYSING FINANCE FOR SYSTEMS CHANGE

- **Establish platforms** for multi-stakeholder dialogue and partnerships
- **Institutionalize** innovative business and governance models
- **Unlock** private finance



BRAZIL: IN-COUNTRY NETWORKS

- Working with Brazilian cities with in-country networks to provide broader scale of impact. Networks vary in terms of target audience and objectives.
 - Complete Streets*
 - Complete Streets SP state*
 - Forum Unidades*
 - CASD – Mayoral Commission on Disaster*
 - CPA – Mayoral Commission of Amazon*
 - FISC Network
 - Qualiônibus*
- *in partnership with FNP

BRAZIL: NATIONAL POLICIES

- Providing technical advice and research to drive new national urban policies
 - PNDU - National Urban Development Policy
 - Unidades provide inputs facilitated by WRI Brasil
 - Plano Clima - adaptação
 - CASD provide inputs facilitated by WRI Brasil
 - National Urban Mobility Plan
 - PNATRANS – National road safety plan
 - National sustainable finance taxonomy
 - FISC network provide inputs facilitated by WRI Brasil
 - Periferia Viva program

BRAZIL: IN-COUNTRY NETWORKS

- **UNICIDADES: AN EXAMPLE**

Training: promote trainings by WRI Brasil and partners to increase technical capacity on selected topics

Peer-to-peer learning: regular online and in-person meetings to promote exchange and document best practices

Facilitated contributions to national government: compilation of contributions to Housing Program and National UD Policy



Influence and support implementation of PNDU

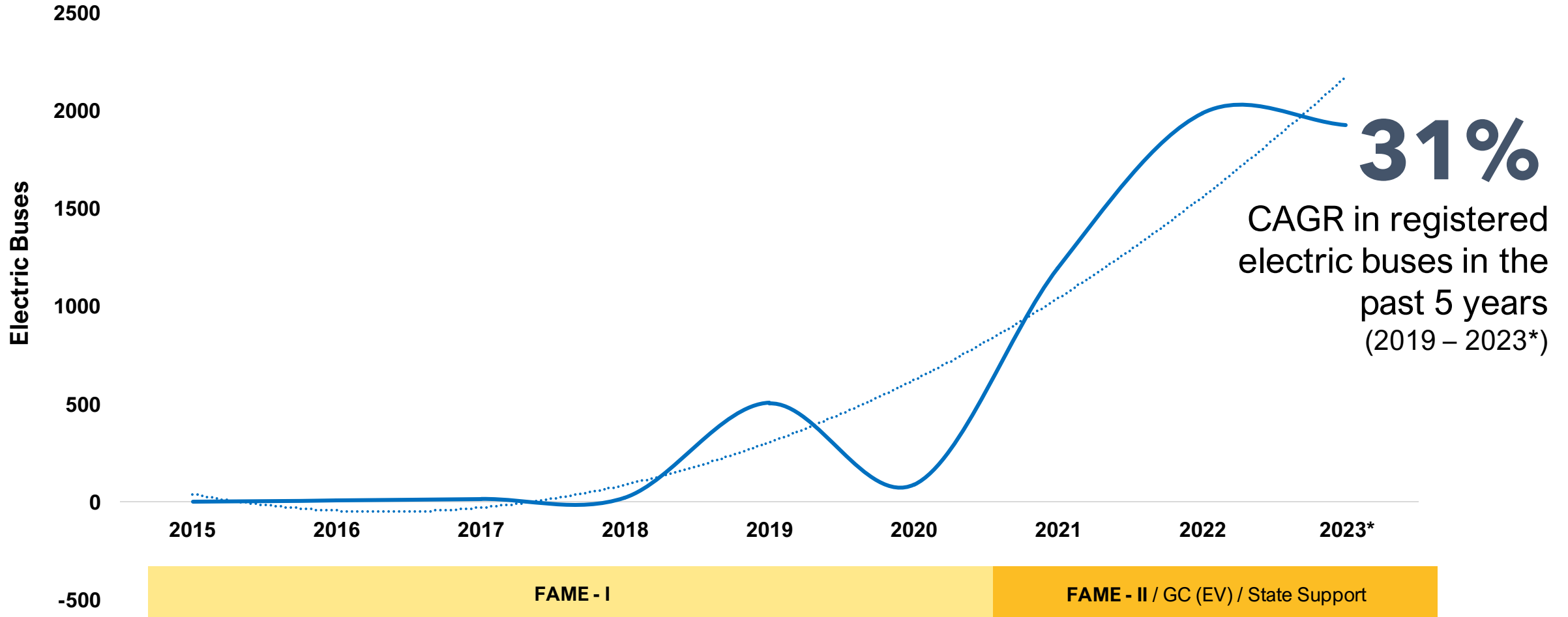
TOTAL NUMBER OF CITIES: **90**

BRAZIL: RESULTS

- Replicating implementation
 - Complete Streets
 - LVC instruments
 - Public transport quality measures
- Scaling-up concepts and objectives incorporated into national public policies
 - Complete Streets in PNATRANS
 - Climate Justice in PNDU
 - Urban Adaptation in PNDU and Plano Clima
 - NBS in PNDU and Plano Clima
 - Urban Labs into Periferia Viva program
- Training and dissemination
 - More than 1,000 people trained
- Potential to drive finance decision as a following step of national policies, but also through FISC Network
 - National investment programs: i) Green and Resilient Cities ii) Periferia Viva iii) PAC
 - Taxonomy
 - Training DFIs

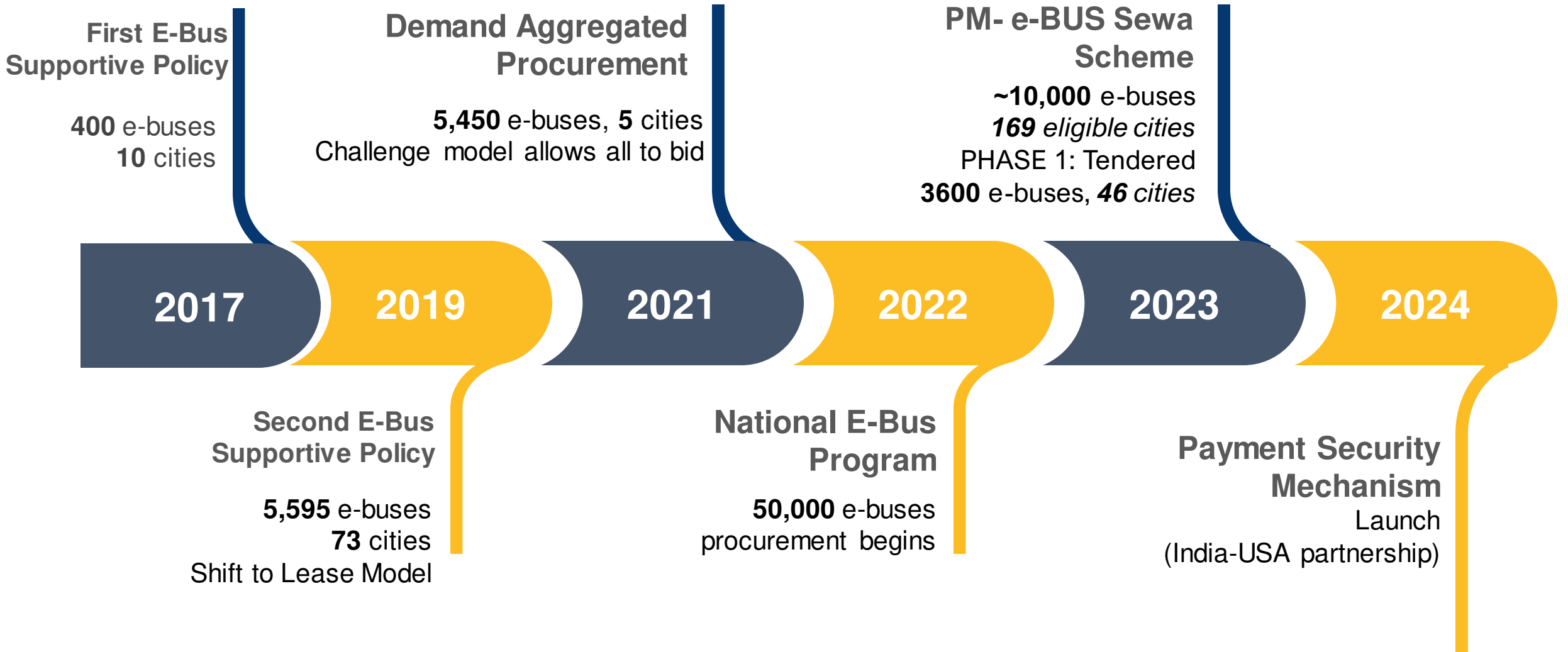
ACCELERATING ADOPTION OF E-BUSES IN INDIA

Growth in Registered Number of Electric Buses (2015 – 2023*)



Source: Buses Registered as per Vahan-Gol & WRI India Assessment Till date

Accelerating Adoption of e-Buses in India

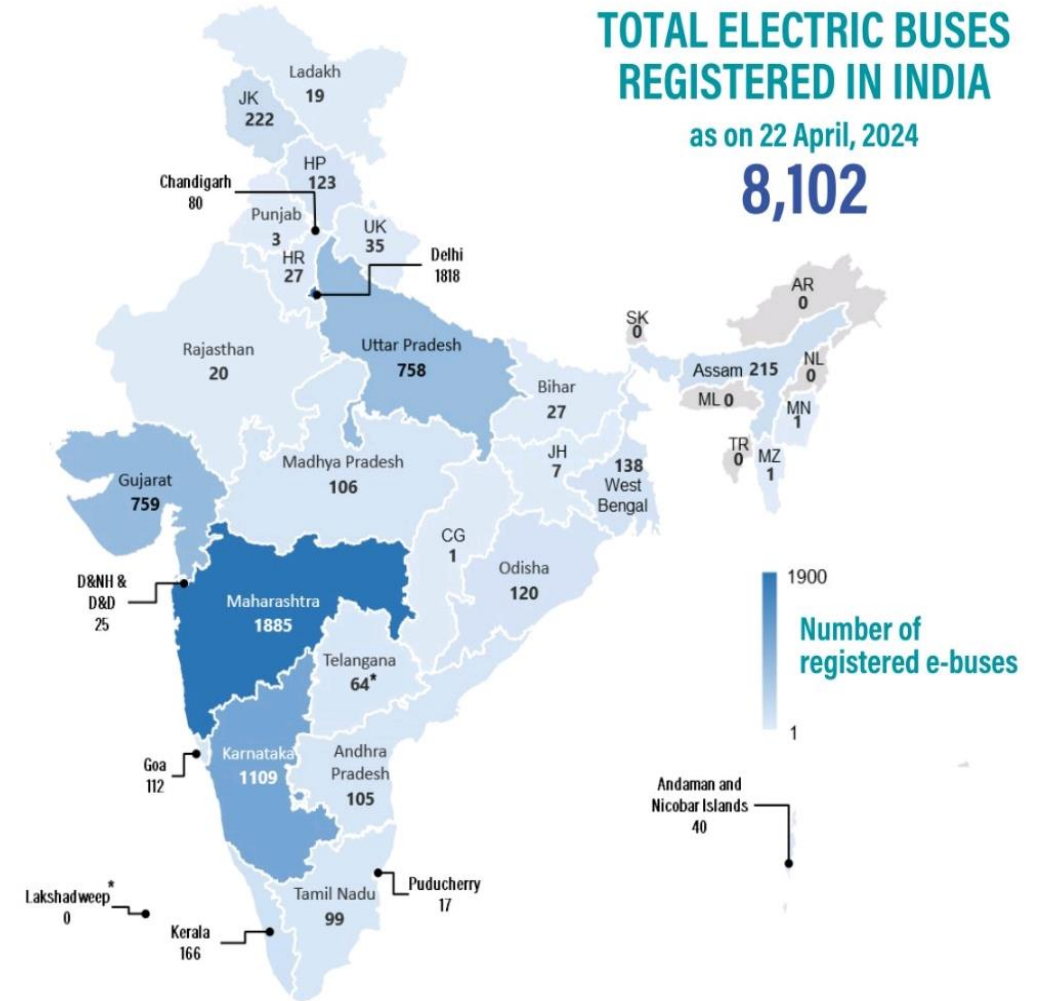


India E-bus journey

Current Status of Electric Buses in India



The Current Public Bus Deficit in India is 300K



DISCLAIMER: This map is for illustrative purpose and does not imply the expression of any opinion on the part of WRI India, concerning the legal status of any country or territory or concerning the determination of frontiers or boundaries.

NOTE: The map shows state-wise electric buses registered as Bus and Omni Bus under the category of Public Service Vehicles as per the data from the Vahan Dashboard (MoRTH, GoI), accessed on April 22, 2024. *Vahan Dashboard does not include data from Telangana and Lakshadweep. The electric bus numbers for Telangana are obtained from the TSRTC website.



* The National Electric Bus Programme (NEBP)

PARADIGM SHIFT IN THE E-BUS LANDSCAPE

Aggregating e-bus demand through NEBP, PM e-Bus SEWA and institutionalizing e-bus adoption

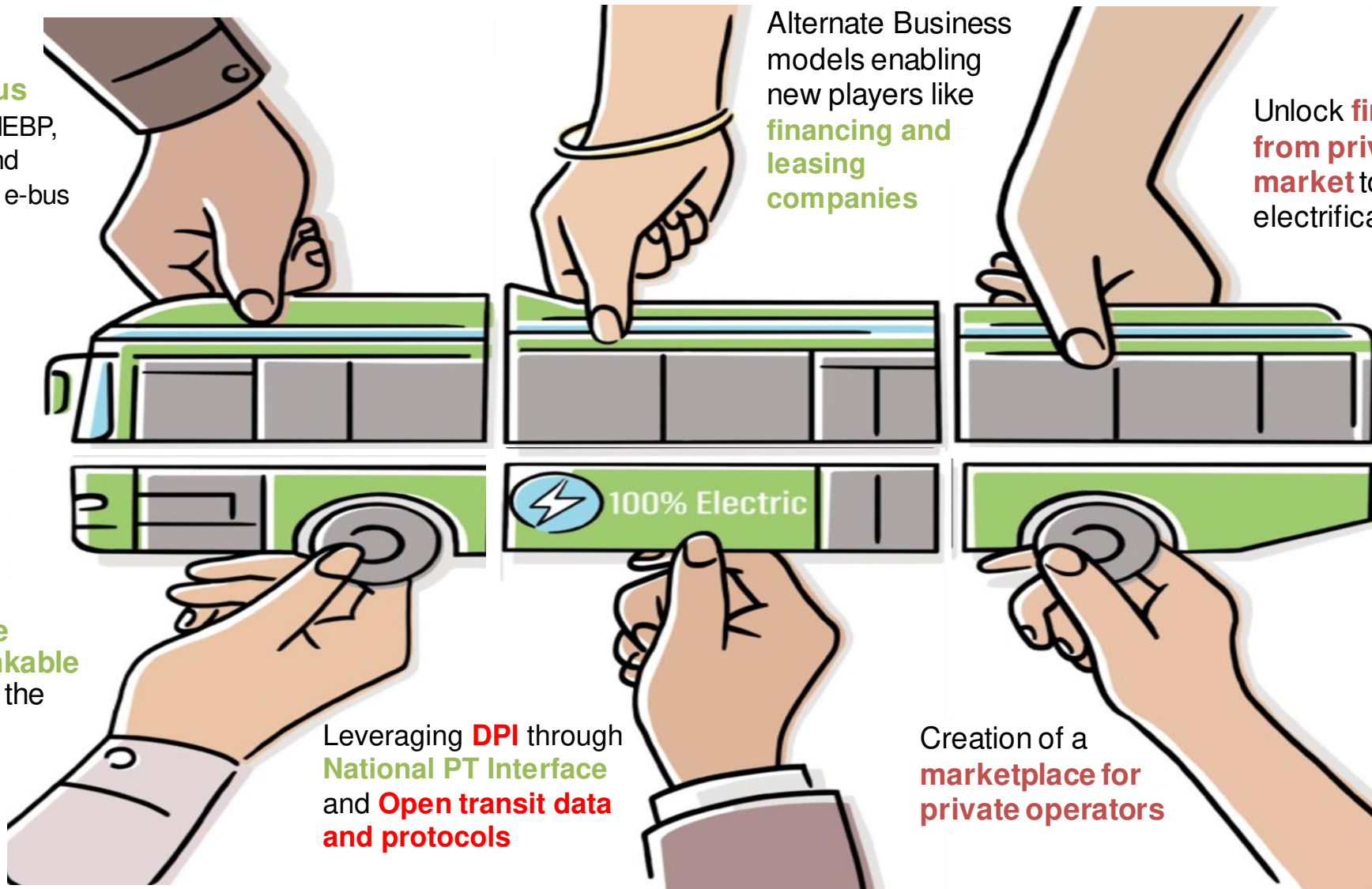
Alternate Business models enabling new players like financing and leasing companies

Unlock financing from private capital market to scale electrification of buses

Creating viable long-term bankable contracts with the India-US PSM

Leveraging DPI through National PT Interface and Open transit data and protocols

Creation of a marketplace for private operators



E-MOBILITY ECOSYSTEM AND Partners

Policy Makers

National



Sub-National



Others

CSO



DFI



Financiers



OEMs/Operators



QUESTIONS

- What are the mechanisms by which impact at scale is achieved for Country Transitions and beyond?
- What's the type of global-local collaboration are needed for those mechanisms to work?
- What scaling mechanisms are replicable within, and across, geographies and sectors?

REQUIRED FOR SESSION: LIVABLE NEIGHBORHOODS

Adriana Kocornik-Mina

Aklilu Fikresilassie

Amanda Gcanga

Anjali Mahendra

Catyana Falsetti

Dani Facchini

Daniel Cano

Dimas Fadhil

Eric Mackres

Hellen Wanjohi-Opil

Henrique Evers

James Anderson

Jaya Dhindaw

John-Rob Pool

Jose Luis Samaniego

Leila Surrat

Marc Manyifika

Mariana Orloff

Max Jamieson

Meltem Bayraktar

Michael Doust

Nirarta Samadhi

Pablo Lazo

Robin King

Rogier van den Berg

Roxana Slavcheva

Schuyler Null

Sebastian Varela

Tini Tran

Todd Gartner

Toni Lindau

Beatriz Cardenas

Beth Elliot

George Mwaniki

Prakash Doraiswamy



WORLD
RESOURCES | ROSS
INSTITUTE | CENTER

LIVABLE NEIGHBORHOODS STRATEGIC INITIATIVE

DISCUSSION– ET RETREAT

Prepared by Pablo Lazo and Mariana Orloff

AGENDA

- 1. Ice breaker**
- 2. Outline and present the consultation so far**
- 3. Open discussion**

DISCLAIMER

- 1. This is the beginning of the conversation. To be concluded during the UD retreat in DC**
- 2. The main outcome should be something clear, tangible, not extensive and flexible enough to cater for country offices needs**

Livable Neighborhoods

Connected, vibrant, and inclusive public space and climate-resilient housing.



Connective Mobility

Seamlessly integrated, clean, safe, good quality & accessible to all.



Climate Resilience

Building resilience through integrated water management and nature-based strategies.



INTERVENTION TARGETS & IMPACT BY 2027

LIVABLE NEIGHBORHOODS

5% Increase of residents with access to open public spaces

5% Decrease in urban residents living in slums, informal settlements, or inadequate housing.

CLIMATE RESILIENCE

6k has Of new or enhanced green infrastructure in or nearby cities in the process of deployment

3% Increase in the degree of integrated water resources management

CONNECTIVE MOBILITY

4% Increase in convenient access to PT, including 500% increase in # of e-buses and 15% in e-2/3 wheelers (mostly in Africa)

300 km Of safer roads implemented, including >200 intersections redesigned

Benefits for People, Nature & Climate

% Tree cover

SDG 1.4.1. Households with access to basic services

Connectivity of natural lands

SDG 3.6.1. Death rate due to road traffic injuries

SDG 13.1.1. # of deaths, and affected persons by disasters

SDG 11.6.2. Concentrations of PM2.5

% of urban population exposed to extreme heat

CO2 emissions per capita

Average annual carbon flux from trees

Road transportation CO2 emissions

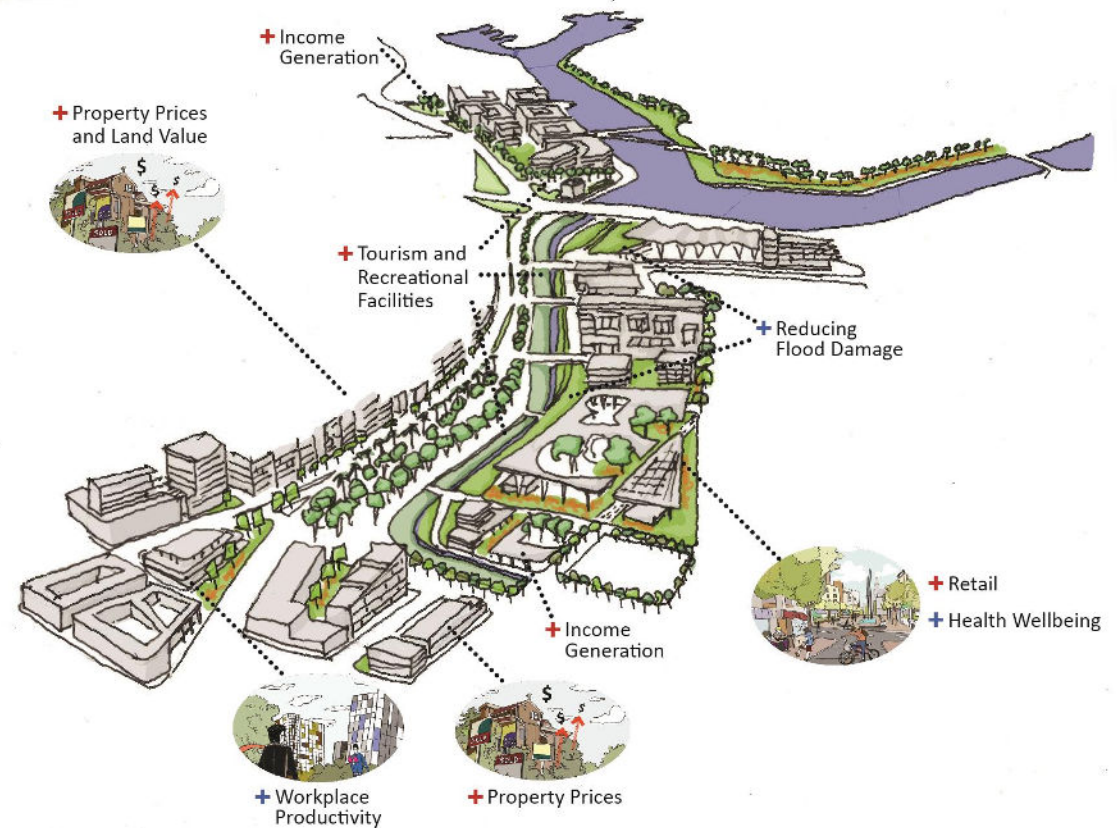


What constitutes a livable neighborhood?

KEY ELEMENTS

- **Sustainable & low carbon**
- **Health** is a central part of the idea: safe, good air quality, and resilient to natural disasters.
- **Economic vitality:** opportunities for local economic development through improved urban design, urban regeneration, transformation of land uses into higher
- Reliable access to **core services and housing**
- Increased access to **public and green spaces** that foster a sense of community, while minimizing resource use and emissions.
- **Access to mass transport**
- **Opportunities for active mobility**

Notion of proximity of stuff



HOW TO DO IT?

- Demonstrating and scaling alternative possibilities for **people-focused spatial planning**
- Working on **neighborhood-level interventions (pilots)**
- Providing **technical support for city and regional policy and planning** to scale up and institutionalize livable and resilient neighborhoods
- **Identifying strategic/catalytic projects** and supporting in early project preparation (**pre-financing**)

TOOLS/APPROACHES/METHODOLOGIES

- Accelerators [NBS accelerator]
- Trainings/City Academies (online content and in person) [UrbanShift]
- Geospatial analysis [Heat work, biodiversity indicators for C4F, UrbanShift]
- Geospatial Planning Labs
- Pilot projects [pocket parks, tactical urbanism]
- Design guidelines [TOD]
- Documentation of case studies/lessons
- Neighborhood design through the lens of vulnerable population (women, children)



Nurturing Neighbourhoods Challenge

Supporting Indian cities to shape safe, green and inclusive neighborhoods for infants, toddlers and their caregivers.

Some topics/projects we work on



UrbanShift

A global program transforming cities for people and planet through sustainable, integrated and inclusive approaches to urban development.



Data for Cool Cities

Filling data gaps, enabling insights and scaling infrastructure investment to reduce extreme heat in cities.



Urban Water Resilience Initiative

Building sustainable, adaptive, resilient urban water systems.

NBS IN ROAD SAFETY





NBS within CITIES CLIMATE RESILIENCE

HAZARDS AND NATURE-BASED SOLUTIONS

Nature-based Solutions		Challenges		
		Coastal flooding and erosion	Urban stormwater flooding	River flooding
Coastal	Coral and oyster reefs	X		
	Sandy beaches and dunes	X		
	Seagrass	X		
Wetlands	Salt marshes	X		
	Mangroves	X		
	Constructed wetlands		X	
	Inland wetlands			X
Urban	Green roofs		X	
	Permeable pavement		X	
	Open spaces (e.g., parks)		X	
	Bioretention areas (e.g., vegetated basins)		X	
Rivers	Floodplains and bypasses			X
	River beds and banks			X
Forests	Upland forests			X



GROUP REFLECTION – WHAT ARE WE MISSING?

EXERCISE 1

EACH OFFICE WOULD SAY WHAT LVN MEANS AND THE INTERDEPENDENCIES WITH OTHER STRATEGIC INITIATIVES

- Broader definition of health (air quality, public spaces to socialize, green infrastructure for heat management)
- Public spaces
- NBS
- Green corridors
- Active mobility
- Designing livable neighborhoods under the lens of kids/women (build on school zones work: playgrounds?)
- Other?

GROUP REFLECTION – WHAT ARE WE MISSING?

EXERCISE 2

WHAT ARE THE BASIC KEY ELEMENTS TO TALK TO DONORS OR PARTNERS ABOUT WRI TAKE ON LIVABLE NEIGHBORHOODS?

- Try not to cover many topics
- Come with 3 to 5 elements, three of which are directly applicable in your country



WORLD
RESOURCES | ROSS
INSTITUTE | CENTER

LIVABLE NEIGHBORHOODS STRATEGIC INITIATIVE

DISCUSSION– ET RETREAT

Prepared by Pablo Lazo and Mariana Orloff

REQUIRED FOR SESSION: CONNECTED MOBILITY

Adriana Kocornik-Mina

Aklilu Fikresilassie

Anjali Mahendra

Beatriz Cardenas

Benjamin Welle

Beth Elliot

Catyana Falsetti

Claudia Adriazola-Steil

Cristina Albuquerque

Dani Facchini

Felipe Ramirez Buitrago

George Mwaniki

Jose Luis Samaniego

Leila Surrat

Max Jamieson

Michael Doust

Paula Santos

Pawan Mulukutla

Prakash Doraiswamy

Robin King

Rogier van den Berg

Sebastian Varela

Sudeshna Chatterjee

Tini Tran

Toni Lindau



WORLD
RESOURCES
INSTITUTE

WRI IN EUROPE

June 2023



EUROPE IN THE GLOBAL CONTEXT



**Invasion
of
Ukraine**



**Joint
Energy
Purchase**



**Rethinking
Africa
Relations**



**Green
Deal**



**Midpoint
US/China
Relations**



**Research
and
Agricultural
Budget**

OUR TEAM: WRI EUROPE IN A NUTSHELL

WRI EUROPE
STRATEGY SESSION



- 150 Staff from across all global programs and functions
- WRI Europe: 1 “country” two locations: the Hague, London and presence in Brussels, Istanbul, Bonn (UNFCCC/ UNOPS: NDCP partnership)

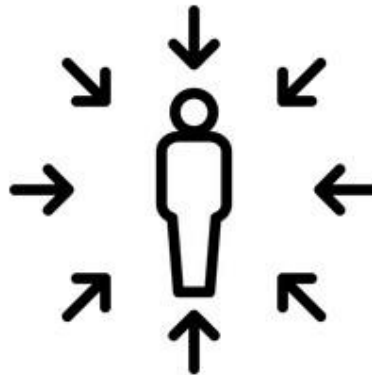
Picture: WRI Europe All Staff Planning Session

WHY IS EUROPE IMPORTANT FOR OUR GLOBAL STRATEGY?

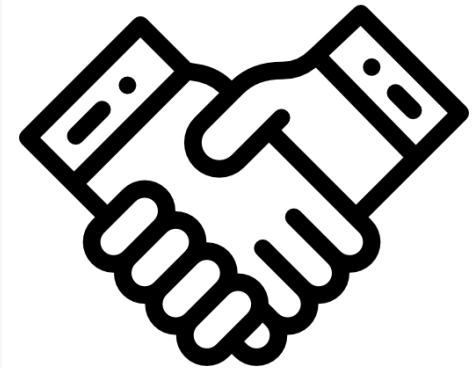
EUROPE AS A
DRIVER FOR
CHANGE



EUROPE AS A
CONSUMER



EUROPE AS A
PARTNER FOR
CHANGE



GLOBAL AND LOCAL IN ONE OFFICE

100% PART OF OUR GLOBAL WRI STRATEGY

FROM EUROPE

Staff with global program roles working FROM the Europe office because of:

- Knowledge-partners,
- Funding opportunities in Europe.
- Networks/Proximity.

ON EUROPE

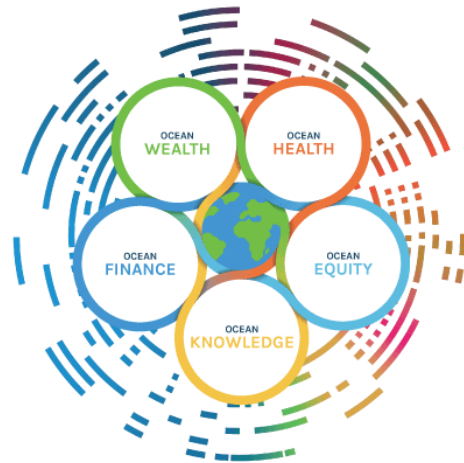
Staff with European program roles:

- *Work ON European Union (EU) Institutions.*
- *Work ON countries/cities/companies in Europe.*

WRI WORK IN EUROPE TODAY: FROM & ON



**Institutional
Development**



coolfood

Cities4Forests



and more...

OUR APPROACH:



WHY US? WHAT CAN WRI OFFER TO EUROPE (OUR NICHE IN EUROPE) :



Global Interface

For example:

- EUDR leveraging our global network
- Independent assessment of global land use implications of EU bioenergy policies
- Connecting European partners to global networks such as Folu, PACE, Cities4Forests.

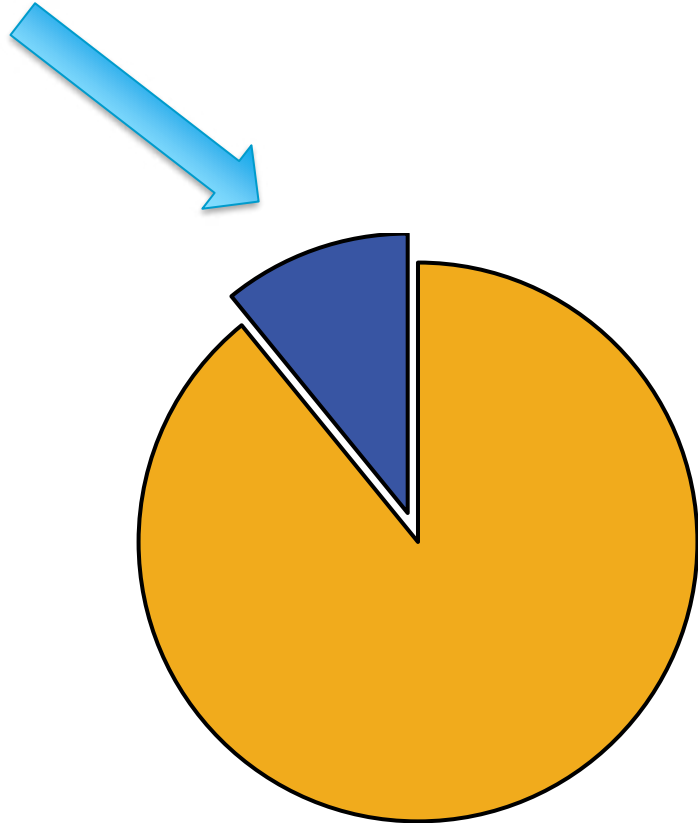
Supporting Transitions where WRI has unique research/tools for impact.



For example:

- Oceans program supporting 4 European countries in implementing their pledges
- Contributing to dietary shifts through cool food brand and alternative proteins
- EUDR- enabling monitoring through connection to our global monitoring tools
- System Change Lab informing European policy makers of latest insights

WHAT TOC SHOULD WE DEVELOP FOR WORK ON EUROPE?



A few important notions to remember

- ODA cannot be spent on Europe unless directly relevant for Global South.
- Working on Europe gives potential access to new funding streams (non ODA/ non- international). EU research funding, bilateral funding, European foundations.
- Partnering is key for accessing most European funding.

All work needs to contribute to WRI impact targets

WRI EUROPE OFFER FOR THE STRATEGY :



WRI EUROPE OFFER: EU DESK / BRUSSELS PARTNERSHIP



EU desk:



Connecting, informing, tracking, partnering, and raising our profile in the EU.

System Transformation Hub:



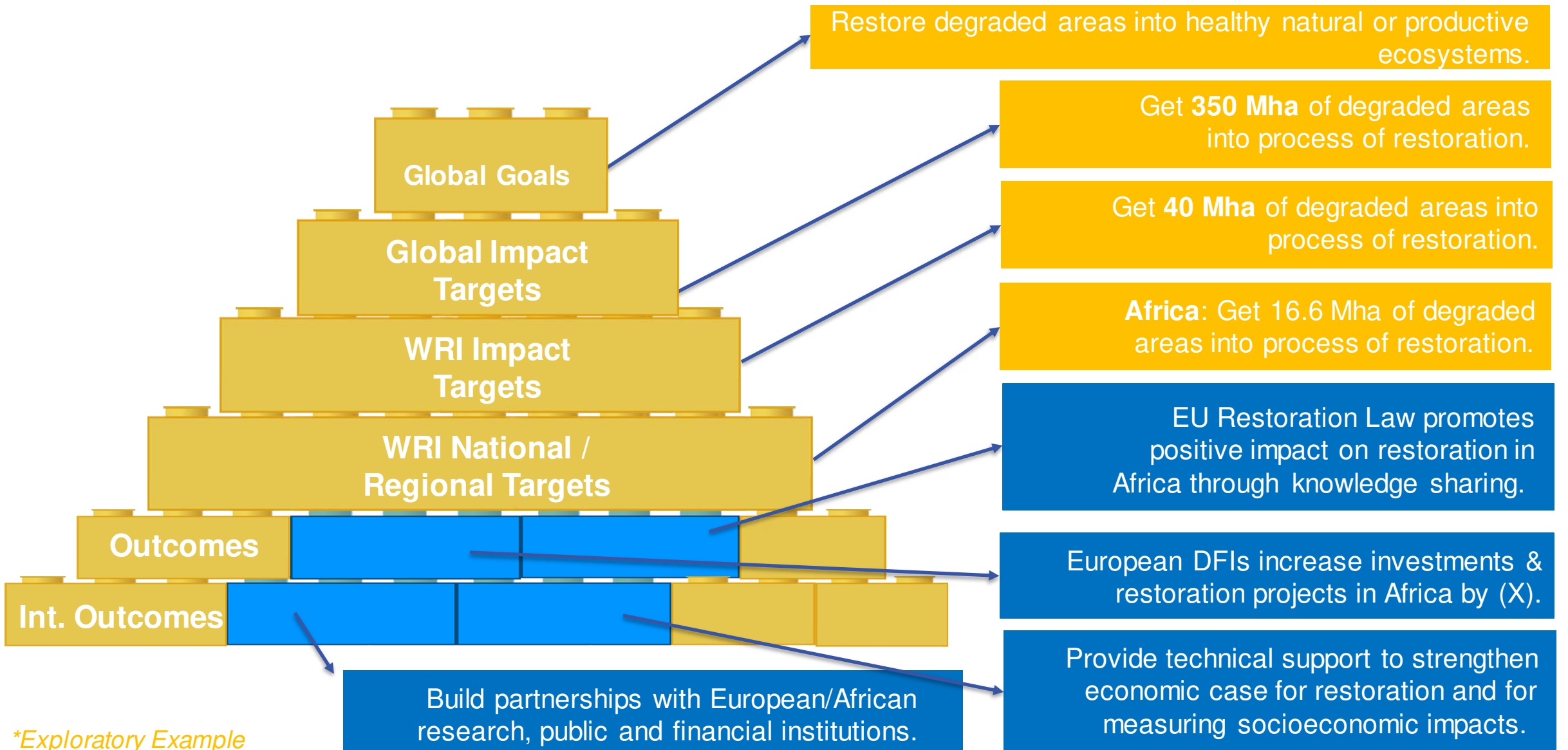
Joining forces for Systems Change within the EU.



ONE WRI: WORKING FROM AND ON EUROPE IN AN ALIGNED GLOBAL STRATEGY

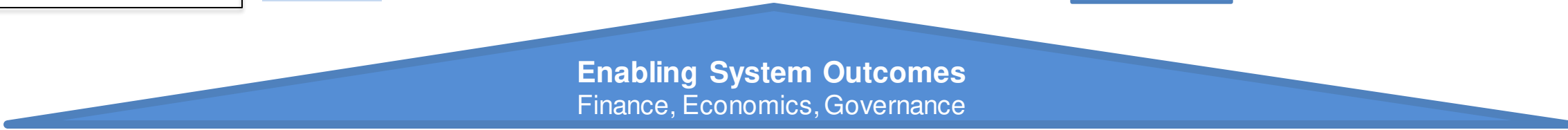
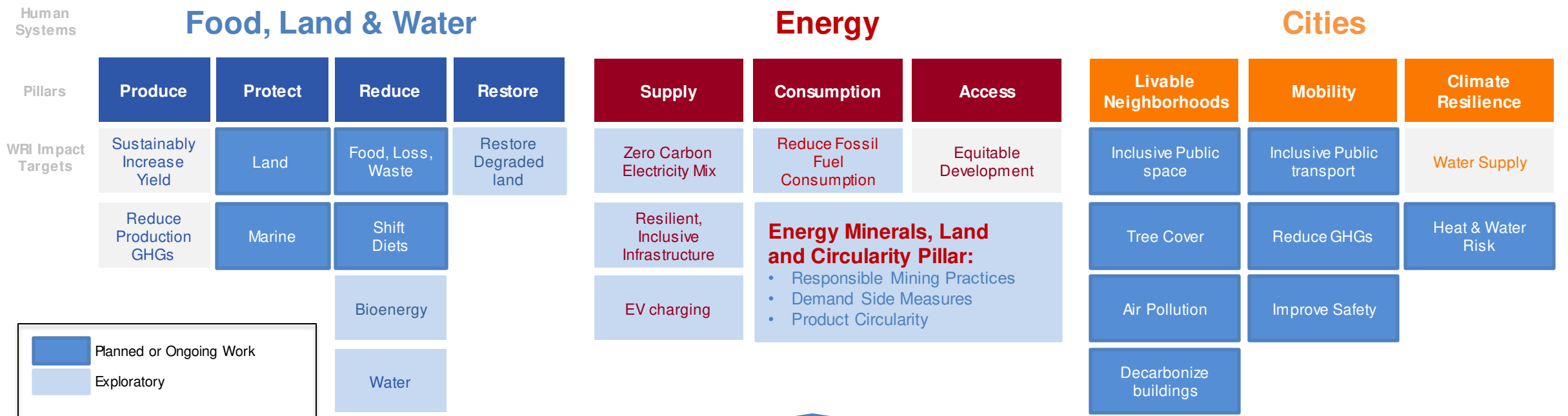


WORK ON/FROM EUROPE: ACHIEVING COLLABORATIVE RESULTS ON EUROPE LINKED TO IMPACT OUTSIDE OF EUROPE. FLW – RESTORATION - AFRICA



**Exploratory Example*

Our work ON Europe within WRI's Global Strategy



STRATEGIC FOCUS 23-27: FOOD, LAND & WATER



Pillars	Protect		Reduce		
WRI Impact Targets	Marine	Land	Food, Loss, Waste	Shift Diets	Bioenergy
WRI Europe Thematic Areas	<p>Support and inform European governments to develop and manage plans for <u>Sustainable & Equitable Ocean Economies.</u></p> <p><i>Collaborative Result</i></p>	<p>Strengthen and amplify the relationships of the global <u>Nature Crime Alliance</u> in Europe.</p> <hr/> <p>Promote enforceability and global <u>positive performance of the EU's Deforestation Regulation.</u></p> <p><i>Collaborative Result</i></p>	<p>Influence and support European institutions in establishing and delivering ambitious plans for <u>food loss and waste reduction.</u></p> <p><i>Collaborative Result</i></p>	<p>Support and influence food providers to <u>reduce the climate and environmental impact of the food</u> they serve.</p> <p><i>Theory of Change</i></p>	<p>Promote reduced use of land for biofuels by ensuring <u>carbon cost of opportunity accounting</u> in EU policies.</p> <p><i>Theory of Change</i></p>

STRATEGIC FOCUS 23-27: ENERGY



Pillars	Minerals, Land & Circularity *		
WRI Impact Targets	Demand-Side Measures	Product Circularity	Responsible Mining Practices
WRI Europe Thematic Areas	<p>Identify key demand-side measures to limit primary minerals/ materials input needed by the clean energy transition and work alongside European cities and companies for their implementation.</p> <p><i>Theory of Change</i></p>	<p>Leverage on Europe's leadership in circular economy to align on mineral recycling and accelerate recycling of mineral-rich waste streams.</p> <p><i>Theory of Change</i></p>	<p>Increase the knowledge base on deep-sea mining, to inform key decisions and contribute to regulatory development.</p> <p><i>Collaborative Result</i></p>

*The Minerals, Land and Circularity Pillar is currently under development at an institutional level.

STRATEGIC FOCUS 23-27: CITIES



Pillars	Livable Neighborhoods				Mobility			Climate Resilience
WRI Impact Targets	Inclusive Public space	Air Pollution	Decarbonize buildings	Tree Cover	Inclusive Public transport	Reduce GHGs	Improve Safety	Heat & Water Risk
WRI Europe Thematic Areas	<p>Strengthen WRI's role as strategic knowledge and accountability partner for major European cities, providing support and learning opportunities as they lead net-zero transitions.</p>							
	<p><i>Collaborative Result</i></p>		<p>Drive cross-matrix research and learning collaboration with leading European knowledge institutions on (a) the material aspects of zero emission buildings; (b) the use of nature-based solutions to cool cities down; (c) cities driving consumption and lifestyle shifts and green procurement.</p>					<p>Drive cross-matrix research and learning collaboration with leading European knowledge institutions...</p>
		<p><i>Collaborative Result</i></p>		<p>Strengthen and amplify strategic relationships with key European partners to promote adoption, visibility and funding for holistic urban mobility strategies, with a particular emphasis on financing active mobility and knowledge sharing.</p>			<p><i>Collaborative Result</i></p>	
					<p><i>Collaborative Result</i></p>			



WORLD
RESOURCES | ROSS
INSTITUTE | CENTER

DEEP DIVE CITIES INITIATIVE

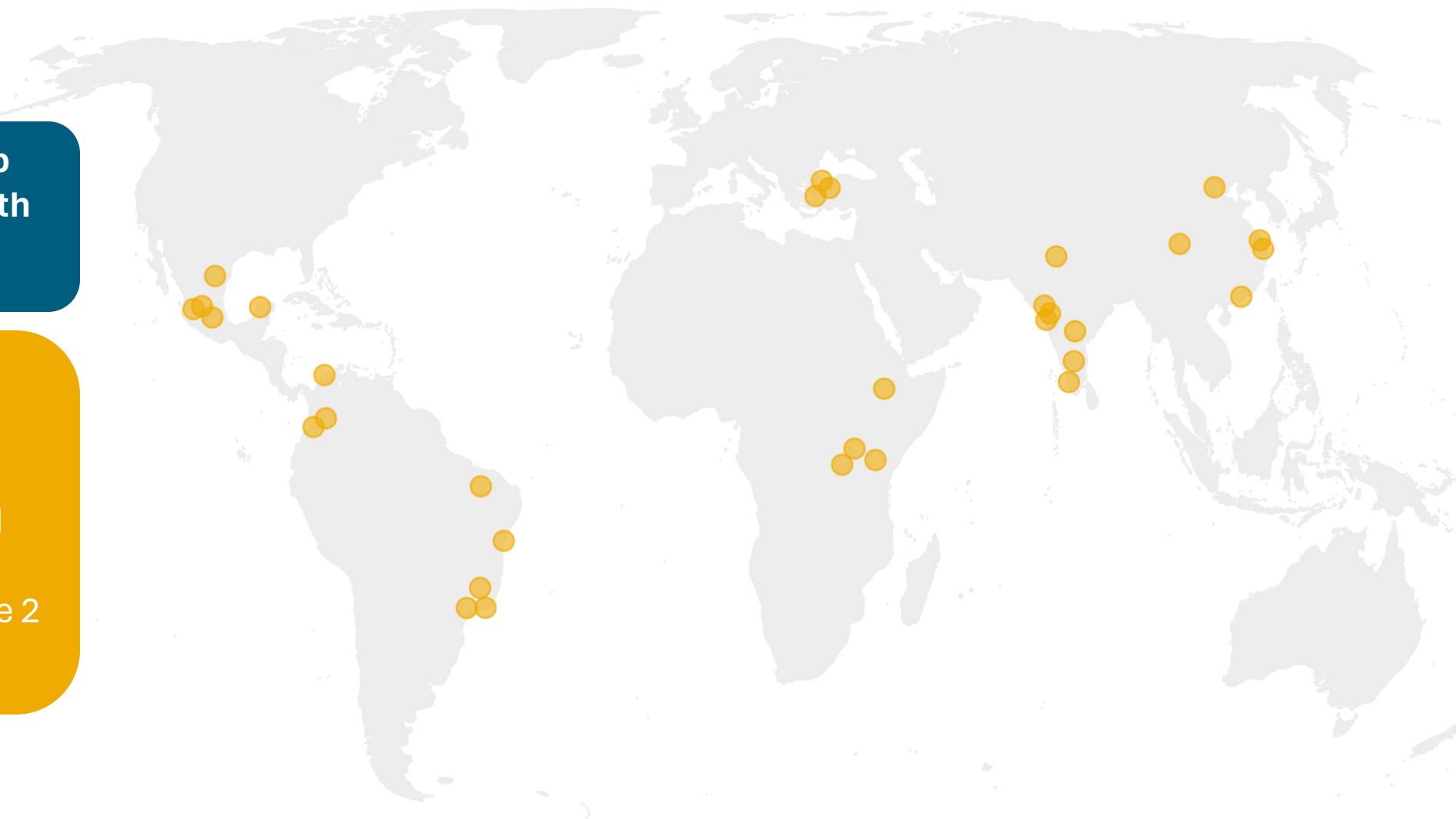
DISCUSSION CYCLE 3 – ET RETREAT

Prepared by Pablo Lazo and Rivvy Eisenberg

DEEP DIVE CITIES

Long-term and Scaled-up strategic engagement with 32+ cities

- 14 Cities sustained engagement from Cycle 1 to Cycle 2
- 2 Development Fund cities advanced to priority cities in Cycle 2



WHAT IS DEEP DIVES?

Locally driven strategic projects as entry points to foster long-term, cross-sectoral, and seed in country transformative change

The Deep Dive Cities Initiative enables transformative urban change in three primary ways:



1. Multi-year engagement
(Bangalore, India)



2. Cross-sectoral technical expertise
(Bogotá, Colombia)



3. Trusted Relationships
(İstanbul , Turkey)

DEEP DIVE CITIES VS GLOBAL IMPACT TARGETS

		Vision								
		Cities provide a high quality of life, equitable access to jobs and essential services for all urban residents.								
		Livable Neighborhoods				Climate Resilience			Connective Mobility:	
		Connected, vibrant, and nature-positive public space and streets where people feel safe and interact.				Building climate resilience in cities through integrated water management and nature-based strategies prioritizing the most vulnerable communities			Seamlessly integrated, safe, good quality and accessible to all. Improves access to opportunities and jobs.	
WRI Impact Targets (by 2027)		5-10% increase in the percentage of under-served communities* with access to public spaces in selected cities	5-10% increase in the number of trees planted** to reduce heat in within selected cities.	5-10% decrease in annual metric tons of PM2.5*** in underserved communities within selected cities.	(X amount) of CO2e avoided through building decarbonization within selected cities.	3-5% Increase in the percentage of vulnerable people with improved access to water supply in select WRI priority cities.	3-5% Decrease in the number of vulnerable people**** with high exposure to climate induced heat and water risks and shocks+ in selected WRI priority cities.	5-10% reduction in the percentage of mobile under served++ in selected WRI priority cities	(X amount) of CO2e avoided via improved operations and/ or adoption of low-carbon technology in selected cities.	8% increase in lives saved benefiting mobile under-served communities in select cities.
Deep Dive Cities	Bangalore									
	Beijing									
	Bogotá									
	Guadalajara									
	Istanbul									
	Kigali									
	Monterrey									
	Mumbai									
	Rio de Janeiro									
	Shenzhen									

LEARNING & EXCHANGE

WORKING ACROSS WRI

Cities Program Strategic Priorities

Building relationships and improving communication with other Strategic Initiatives; fostering a foundation to capitalize on emerging opportunities.

- ❖ Integrated Climate Action
- ❖ Urban & Regional Economics
- ❖ Learning Agenda
- ❖ Equity Integration through WRR
- ❖ Reimagining Public Transport

Other WRI Initiatives

Exploring ways to exchange knowledge and expertise across the institute; sharing lessons learned to enhance our impact.

- ❖ New Urban Mobility Alliance (NUMO)
- ❖ Cities4Forests

KEY SUCCESS FROM CYCLES 1 & 2

- ✓ Internal **cross initiative relationships** and improving communication with other Strategic Initiatives (including Climate Action, Cities4Forests, and NUMO). Enable environment for collaboration.
- ✓ Developed a **shared narrative and communications strategy** for communicating the DD unique approach to external funders and global audiences.
- ✓ Developed [website landing page](#) for Deep Dive and **launched blog series** highlighting Deep Dive history, future, and city success stories
- ✓ Peer-to-Peer **Knowledge Exchange & Trainings between country teams**; multi-day in-person knowledge exchange and planning retreat this May 2024
- ✓ Published and launched Practice Notes on **long-term work** in Mexico City and Bangalore
- ✓ Ability to **leverage relationships** and partnerships for ecosystem change
- ✓ **Demonstration of impact** through on-ground projects

CHALLENGES & NEXT STEPS

1. Standardize Reporting

- Establish **standardized baseline indicators** for measuring long-term success across city level projects for all Deep Dive Cities
- Develop a **streamlined reporting system** in alignment with PMEL

2. Maintain **long-term engagement** across multiple cities (+32)

3. Integrate **multidisciplinary scoping** across global workstreams and global core strategies*

4. Navigate the local **political landscapes**

5. Align fundraising or **co-financing opportunities** at the country level

6. Receive additional revenue to **fund new project opportunities** in Indonesia

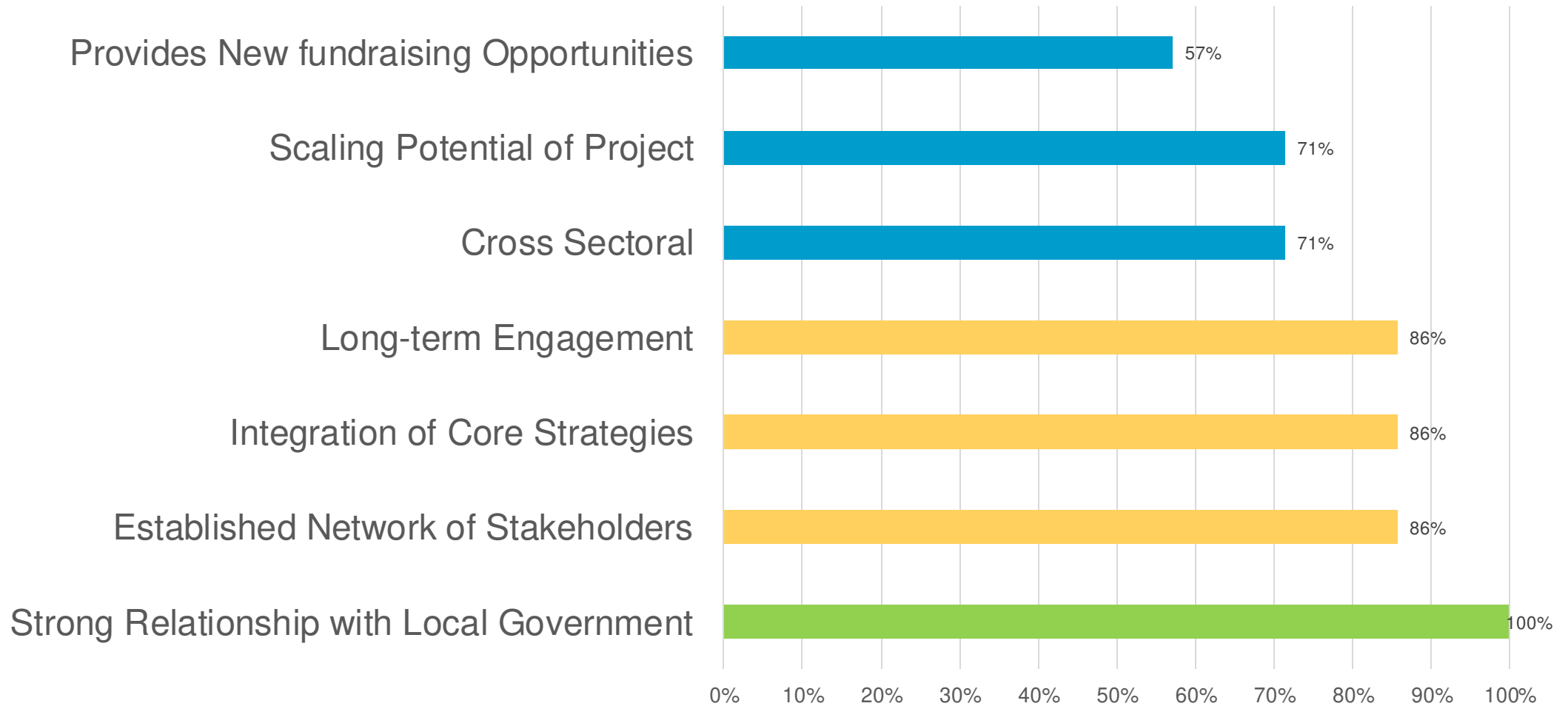
LEARNINGS GOING FORWARD

- **Inclusive Definition of Deep Dive Cities**
 - Proposed Action: Combine the Development Fund and Priority Cities under a single classification of Deep Dive project
 - All projects are called a “**Deep Dive City**” or “**Deep Dive Metropolitan Region**” depending on their scale
 - Continue to provide the same delivery platform – global core team and in-country team across all offices
- **Selection of Cycle 3 Projects from Existing Pool of Cities Promotes Deep Engagement**
 - Improved Selection Process: Country Offices select cities from the existing pool of 32 Deep Dive cities based on local expertise and on-the-ground knowledge; Cities must meet criteria aligned with DD and Cities Program objectives
 - Encourage teams to continue work in the same city, but adjust the scope to adapt to the city’s shifting needs and new opportunities
- **Diversify the Portfolio of Deep Dive Cities**
 - Expand funding to pursue Deep Dive opportunities in Indonesia following the successful addition of Colombia in Cycle 2
- **Enhancing communications**
 - Cycle 3 increased communications budget
 - Expanding scope of support/offerings to include updates, infographics, data sheets, blogs, etc comms products tailored to each project’s need – best suited to amplify and disseminate the project achievements to the best audience.
- **Flexibility of funding and scope to encourage innovation**
 - Establish a flexible pool of funds for emerging opportunities and projects in need
 - Expand funding for WRI Indonesia and Communications
 - Refocusing funding from development cities to top priority cities

HIGHLIGHTS FOR CYCLE 3

- Streamlined 18-month Timeline (October 2024 - May 2026)
- Total of 9 Country Offices, including WRI Indonesia
- New Combined Category and Funding Pool for “Deep Dive Cities”
- Estimated 10 -14 mature city-level projects in cities with existing Deep Dive engagement
- Increased integration of Cities Communications and other Cities Program Strategic Initiatives
- Integrated scoping process included to support Country Offices during proposal submission

DEFINING A "DEEP DIVE" PROJECT



DISCUSSION – KEY QUESTIONS

- 1. As we prepare for the culmination of three Cycles, what type of outputs do we want to see from the Deep Dive Initiative as a whole?**
- 2. Let's explore the relationship between Deep Dive global and country office teams**
- 3. What would our work in these cities look like without Deep Dives Initiative?**
- 4. Roadmap for cycle 3**

CYCLE 3 ROAD-MAP

Overall Budget approved by the ET Issue to country teams criteria for city selection

Preparation of workplan country teams and global team in coordination with MEL team

Review of country teams workplans

Confirmation of Budget allocation per country office and workplan

Cycle 3
October
2024 to
December
2025

May

May - June

July

August-
September

Monday 4/22	Day 1: Tuesday 4/23	Day 2: Wednesday 4/24 <i>(office)</i>	Day 3: Thursday 4/25	Day 4: Friday 4/26		
Arrival in The Hague	Breakfast					
	Welcome Session (45 min)	Roundtable II: Scaling our Work (75 min)		RPT Workshop (90 min)	Side Session IV (90 min)	Managing Organizational Growth & Financial Health (45 min)
	Retreat Overview & Objectives (30 min)					Bringing Strategic Focus to External Engagements (60 min)
	Focusing on Country Transitions (75 min)	Livable Neighborhoods Pillar Workshop (90 min)	Side Session II (90 min)	Integrated Climate Action Workshop (75 min)		Retreat Summary (60 min)
	Lunch					
	Roundtable 1: Future of the Cities Transition (60 min)		Partnering with WRI Europe (30 minutes)		Elevating Research, Data, & Learning (60 min)	
	Climate Resilience Pillar Workshop (90 min)	Side Session I (90 min)	Connective Mobility Pillar Workshop (90 min)	Side Session III (90 min)	Fundraising Strategy (45 min)	
	Flex Meeting Time (45 min)		Deep Dive Workshop (90 min)		Site Visit + Travel to Rogier's House for Dinner (3 hours)	
	Opening Dinner: Milu	Beachside Dinner: Xiringuito	Optional Dinner		Closing Dinner at Rogier's	
					Begin Departures	

Full Group Discussions

Workshops

Awareness-Raising

LOGISTICS

- Tonight

- 7:00pm: Dinner at ShakShuka
 - **Meet in lobby at 6:45pm if you want to walk together**
- 5:00 - 6:00pm: Development team & Country Office Directors' Meeting

- Tomorrow & Friday

- Starting at **8:30am**, in the hotel meeting room
- We will share the updated agenda in WhatsApp

Confirmed for Dinner:

1. Adriana Kocornik-Mina
2. Adriana lobo
3. Almo Pradana
4. Amanda Gcanga
5. Anjali Mahendra
6. Beth Elliott
7. Cristina Albuquerque
8. Daniel Cano
9. Daniela Facchini
10. Dimas Fadhil
11. Eric Mackres
12. Fernando Paez
13. Hellen Wanjohi
14. John-Rob Pool
15. José Luis Samaniego
16. Maeve Weston
17. Meltem Bayraktar
18. Ondine Brent Eysseric
19. Pablo Lazo
20. Pawan Mulukutla
21. Robin King
22. Sebastian Varela
23. Sudeshna Chatterjee
24. Tini Tran
25. Toni Lindau